

HYDRA-PIER

HAARLEMMERMEER, THE NETHERLANDS, 2002

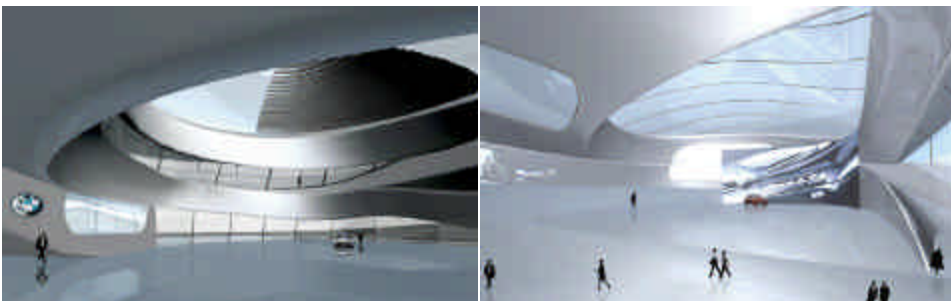
The Hydra-Pier is the main 'gateway' pavilion for the Floriade Festival held in Haarlemmermeer. The project is sited near Schiphol Airport and commemorates both the technologies of flight and of land retrieval through the pumping of vast quantities of water, two aspects of this fast growing city near Schiphol airport. The structure is a 100m long and sited on an artificial body of water and landscape. The pavilion, when activated is covered in a sheath of water that cascades over its entire envelope forming two vertical planes of water through which people enter.

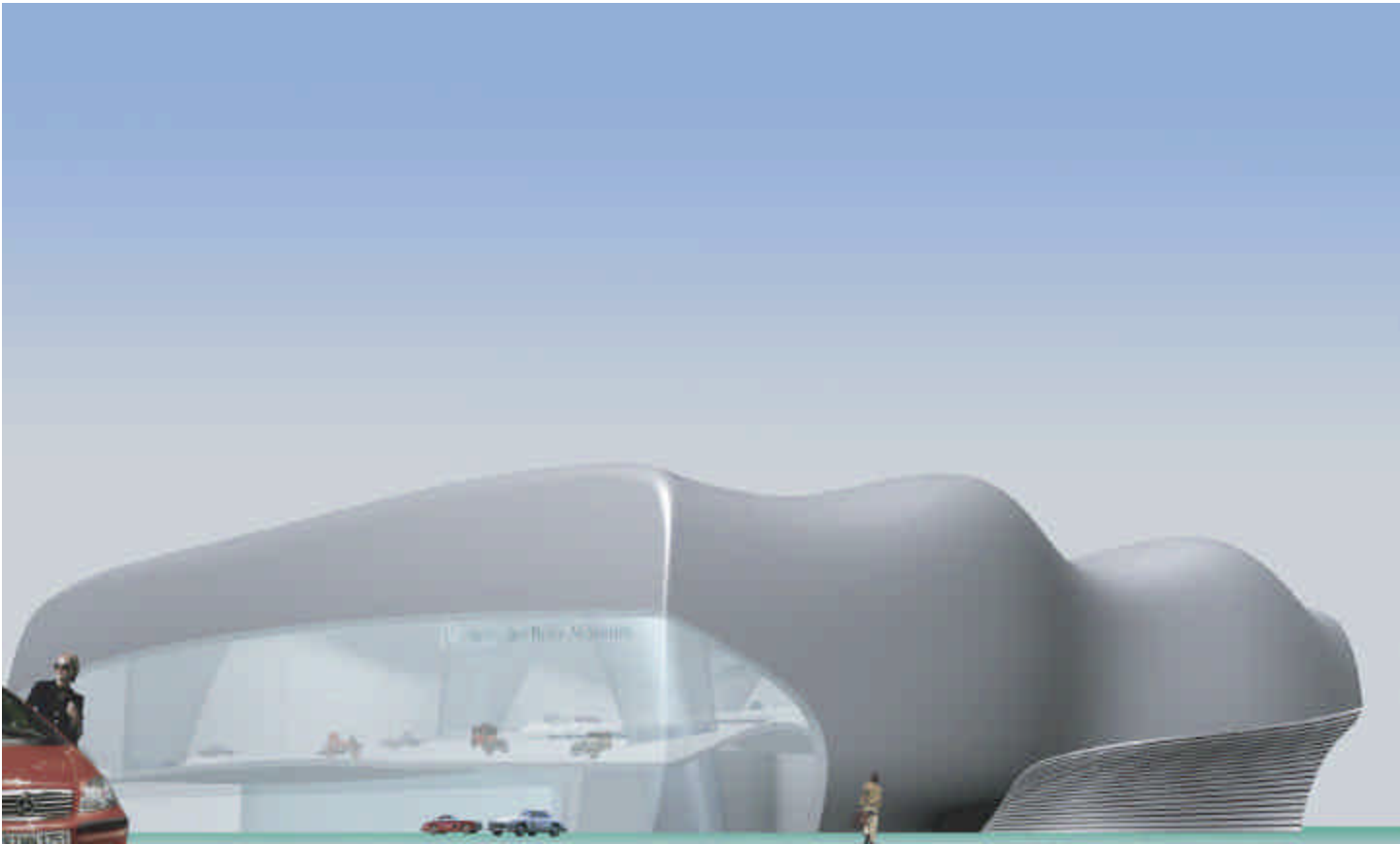




BMW EVENT AND DELIVERY CENTER  
MUNICH, GERMANY, 2001

A building designed to allow visitors and customers to experience the BMW brand through a variety of functions ranging from VR simulation test-drives to showcasing the latest prototype models. The building is designed as a public facility where customers not only acquire their newly delivered automobiles but experience the 'brand' at many levels from product to spatial design. The tectonics of the building is predicated on the movement of vehicles and visitors through space. Cars are able to travel throughout the entire interior of the facility and are on show throughout their trajectory.

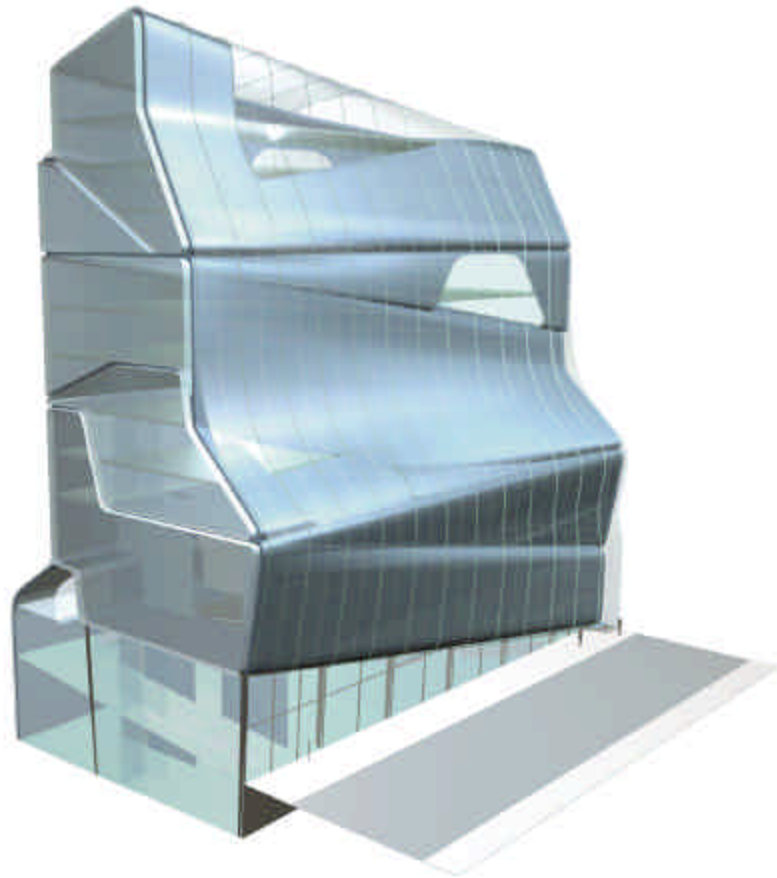




MERCEDES-BENZ MUSEUM OF THE AUTOMOBILE  
STUTT GART, GERMANY, 2001

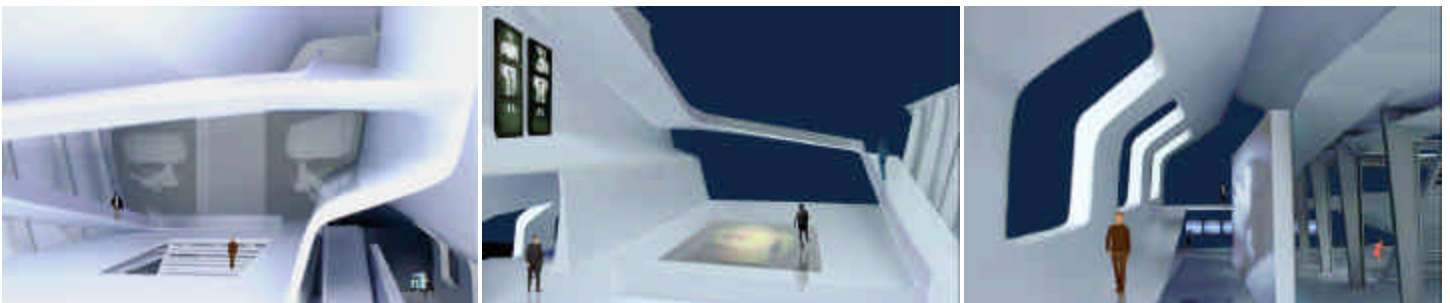
The Museum houses the impressive collection of automobiles and associated content pertaining to Mercedes-Benz and their legacy in designing and manufacturing automobiles. The main exhibition hall displays the entire history of the Mercedes-Benz automobiles on an undulating topological surface. This tectonic interior 'landscape' provides numerous modes of display and viewing for visitors and curators. The building roof, floor, and cladding systems are all integrated, utilizing technologies and tectonics that are already part of automotive manufacture and design. At the terminus of the building's grand interior, a race track on which speed record-setting cars are displayed is accessible.





EYEBEAM MUSEUM OF ART AND TECHNOLOGY  
NEW YORK, NY, 2001

Proposal for a new museum for digital art in the Chelsea district of Manhattan. The proposal consisted of an inner block insertion that provided for exhibition, delivery, auditorium and event spaces on the street level and various gallery spaces and offices on the upper floors. The project was developed with the idea of maximizing the galleries usability and accessibility through 'hinging' floors and transformable interior spaces. The structure is comprised of folded pre stressed concrete slabs and column free. The exterior skin is made up of electronically infused glass panels capable of displaying 256 shades of gray and through computer programming can display large scale moving images over the entire buildings skin.





UNIVERS THEATER  
AARHUS, DENMARK, 1996

A temporary theater structure covering 30,000 square feet of the main Bispertov square in Aarhus. The tensile structure delineates various uses and programs for the annual Aarhus Theater Festival. Each year new built components are incorporated beneath the tensile structure in order to facili-

