

THE BRITISH STANDARD SPECIFICATION (1936) FOR DIMENSIONS OF BRICKS RECOMMENDS:-
 MINIMUM LENGTH, $8\frac{5}{8}$ " ; MINIMUM WIDTH, $4\frac{1}{8}$ " ; MINIMUM DEPTH, $1\frac{15}{16}$ "
 MAXIMUM LENGTH, $8\frac{7}{8}$ " ; MAXIMUM WIDTH, $4\frac{1}{4}$ " ; MAXIMUM DEPTH, $2\frac{15}{16}$ "

BRICKS

MOST OF THE BRICKS SHOWN BELOW HAVE BEEN DRAWN TO THE DIMENSIONS 9" BY $4\frac{1}{2}$ " BY 3" OR FRACTIONS THEREOF. IT IS CUSTOMARY TO ADOPT THESE SIZES WHEN BONDING IS SHOWN BY SINGLE LINES ONLY.

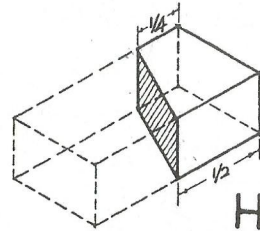
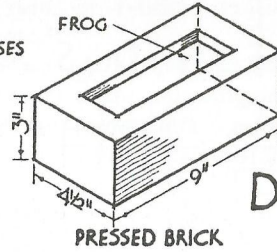
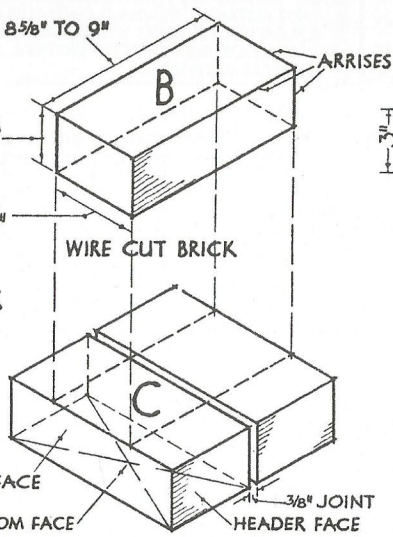
VARIES FROM $8\frac{5}{8}$ " TO 9"

VARIES FROM $1\frac{1}{2}$ " TO 3"

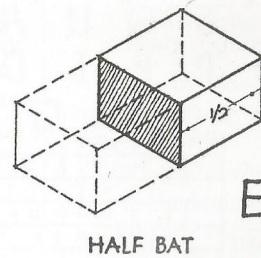
VARIES FROM $4\frac{1}{8}$ " TO $4\frac{3}{8}$ "

A

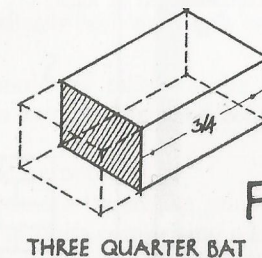
WIRE CUT BRICK
 STRETCHER FACE
 BED OR BOTTOM FACE
 3/8" JOINT
 HEADER FACE



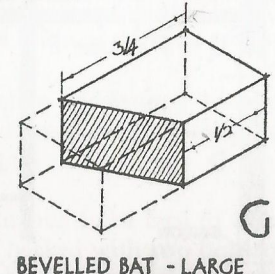
BEVELLED BAT - SMALL



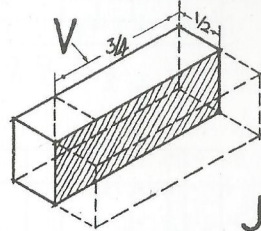
HALF BAT



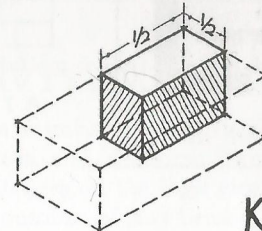
THREE QUARTER BAT



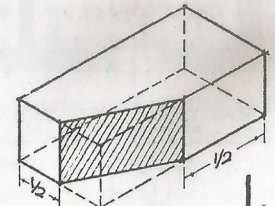
BEVELLED BAT - LARGE



QUEEN CLOSER - HALF

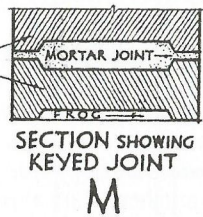
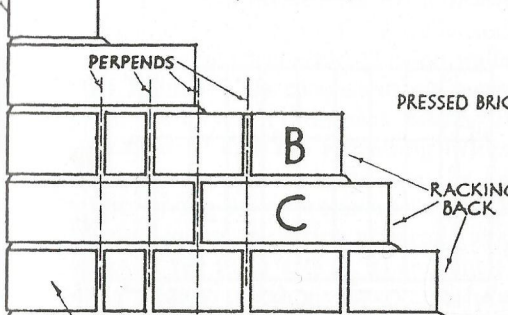


QUEEN CLOSER - QUARTER

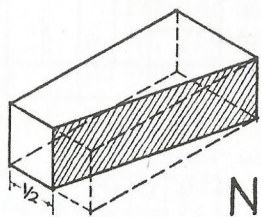


KING CLOSER

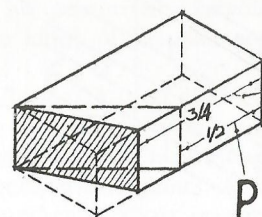
VIEW OF BRICKS "B" & "C"
 (SEE BELOW)



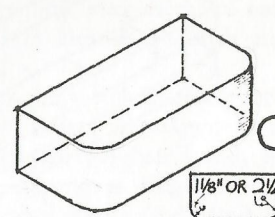
SECTION SHOWING KEYED JOINT



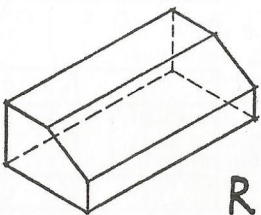
BEVELLED CLOSER



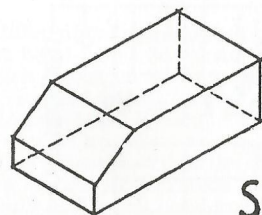
MITRED CLOSERS



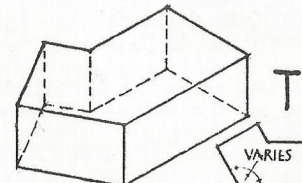
DOUBLE BULLNOSE



SPLAY - STRETCHER



SPLAY - HEADER



DOGLEG

ELEVATION OF PORTION OF WALL IN ENGLISH BOND
 SHOWING MAXIMUM SIZED BRICKS IN ACCORDANCE WITH THE BRITISH STANDARD SPECIFICATION (1936)

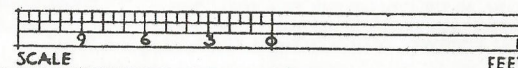


FIGURE 2