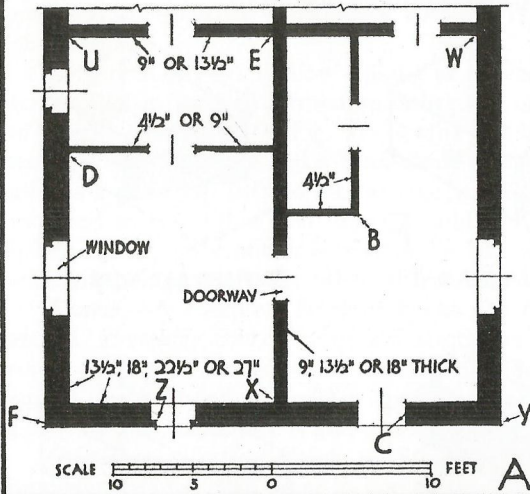


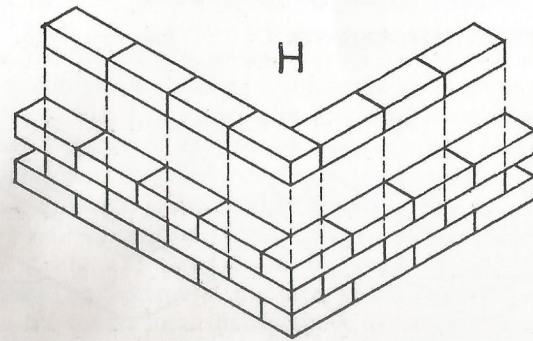
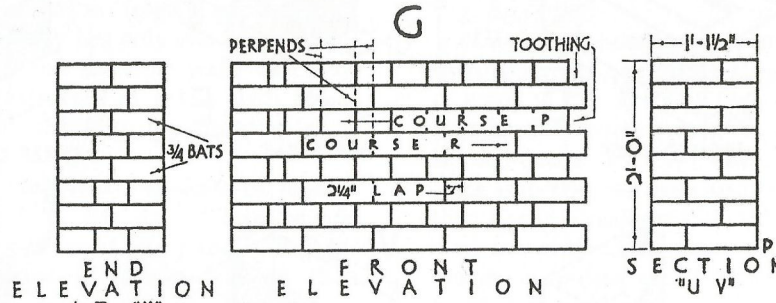
KEY PLAN



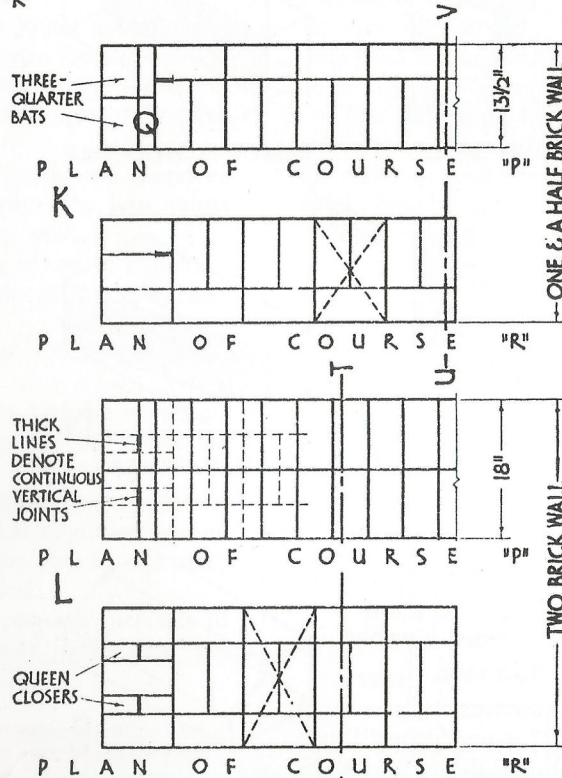
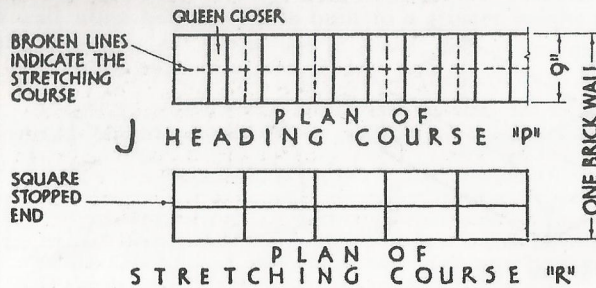
ENGLISH BOND

S Q U A R E
S T O P P E D E N D S

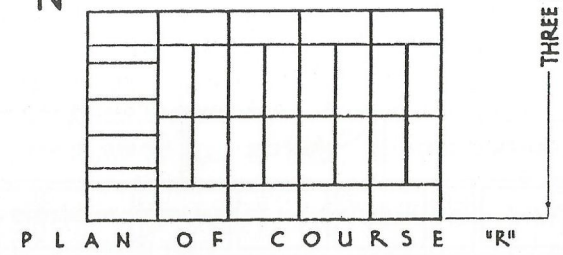
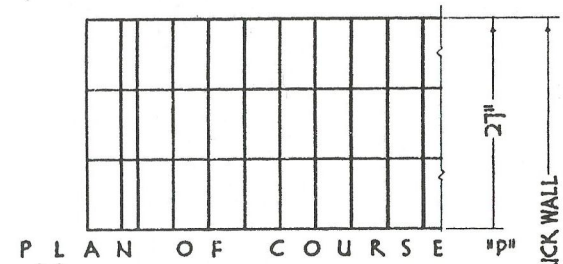
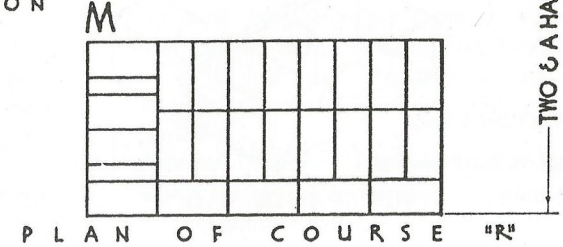
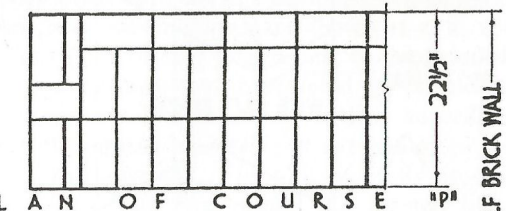
- NOTE:
1. BOND CONSISTS OF ALTERNATE COURSES OF HEADERS & STRETCHERS.
 2. QUEEN CLOSER ALWAYS ADJOINS THE QUOIN HEADER.
 3. LAP EQUALS $3/4$ " (STRETCHING BOND LAP EQUALS $4 1/2$ ").
 4. EACH ALTERNATE HEADER IS CENTRALLY OVER A STRETCHER.
 5. FORMATION OF UNITS WITHIN BROKEN DIAGONAL LINES.
 6. ABSENCE OF CONTINUOUS VERTICAL JOINTS. SEE EXCEPTION.
 7. VERTICAL PERPENDS.



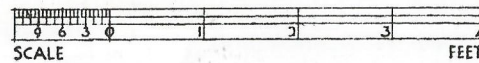
STRETCHING BOND AT "B"



SEE "L", FIG. 4



DETAILS "J" TO "N" INCLUSIVE SHOW ALTERNATIVE BONDING AT THE STOPPED END OF A WALL. THIS CONSTRUCTION COULD BE APPLIED TO THE JAMB OF THE DOORWAY OPENING "C" - SEE KEY PLAN.



MODERN METHODS OF CONSTRUCTION & MATERIALS HAVE REDUCED THE NEED FOR WALLS EXCEEDING TWO BRICKS IN THICKNESS. CAVITY WALLS ARE EXTENSIVELY USED IN LIEU OF SOLID EXTERNAL WALLS.

FIGURE 3.