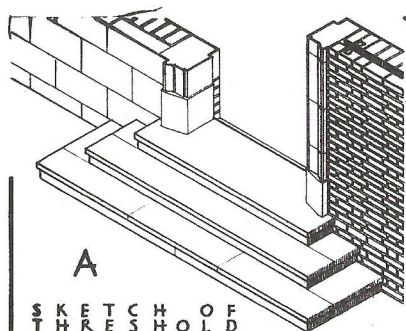
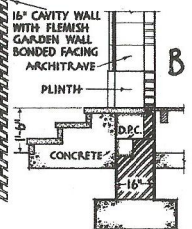


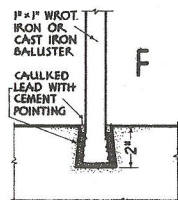
S T O N E S T E P S



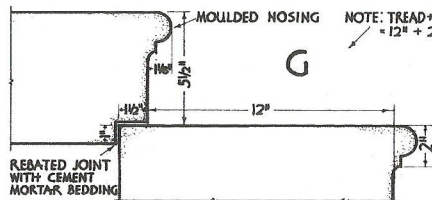
A
SKETCH OF THRESHOLD



B
SECTION "RR"

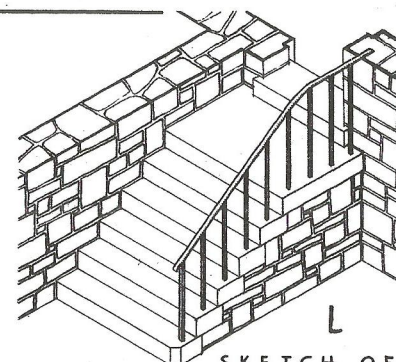


F
METHOD OF FIXING BALUSTERS

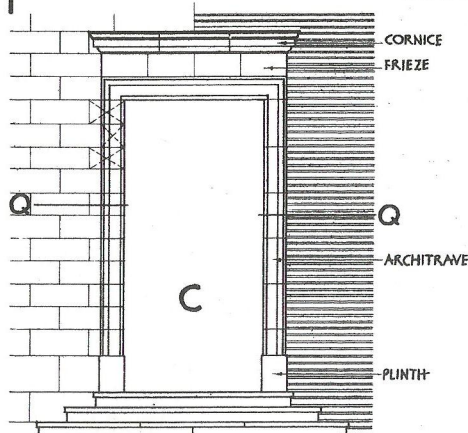


G
DETAIL "T"

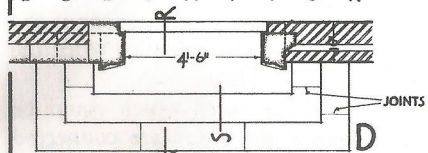
NOTE: TREAD + TWICE RISER = 12" + 2/5 1/2" = 23"



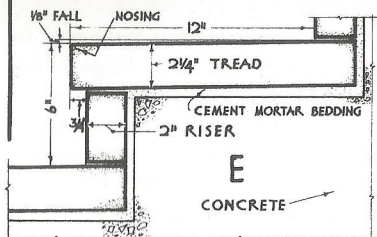
L
ENTRANCE COMPRISING OF RECTANGULAR STEPS



C
ELEVATION



D
PLAN "QQ"

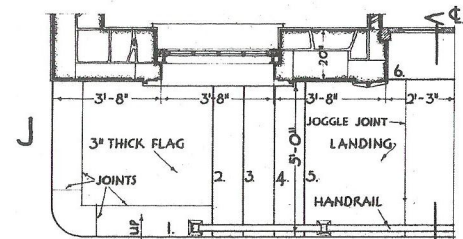


E
SECTION "S" BUILT-UP STEPS

SCALE FOR E, F, G & P
INCHES

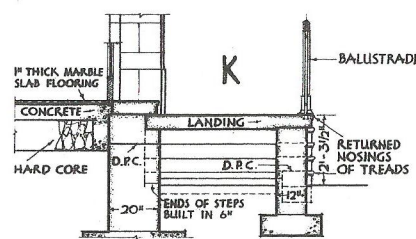


H
ELEVATION SECTION THRO' STEPS

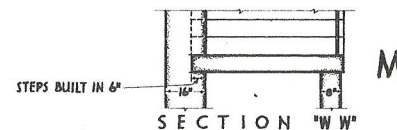


J
PART PLAN SECTION "VV" REBATED RECTANGULAR STEPS WITH RETURNED NOSINGS

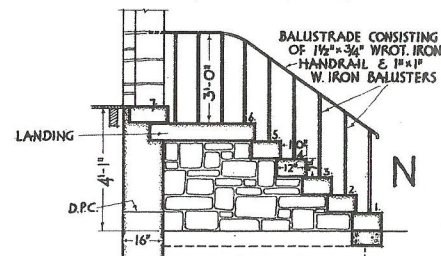
SCALE FOR A, B, C, D, H, J, K, L, M, N & O
FEET



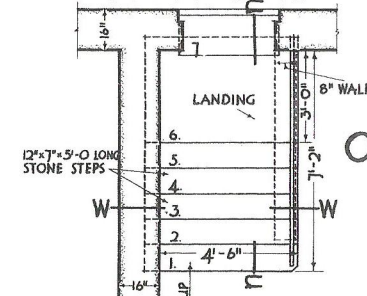
K
SECTION "VV"



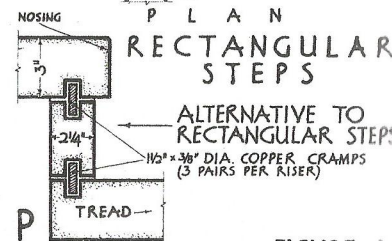
M
SECTION "WW"



N
SECTION "UU"



O
PLAN RECTANGULAR STEPS



P
TREAD

NOTE: THE DOORWAY AT "A", "C" & "D" SHOWS ALTERNATIVE STONE & BRICK FACINGS; THE JOINTS IN THE ARCHITRAVE COURSE WITH THOSE OF THE BRICKWORK. THE BUILDING AT "H" SHOWS TWO ALTERNATIVE TREATMENTS OF THE ASHLAR, THAT ON THE LEFT CONSISTING CHIEFLY OF EQUAL COURSES & THAT ON THE RIGHT OF ALTERNATE WIDE & NARROW COURSES.