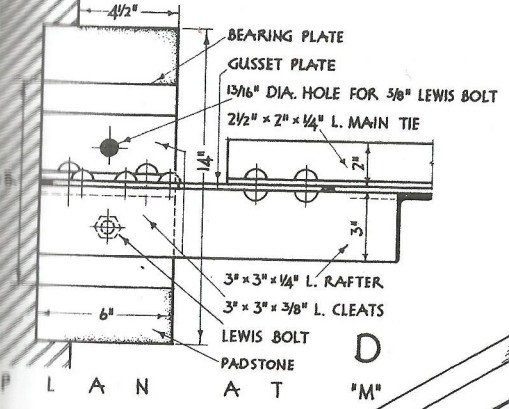
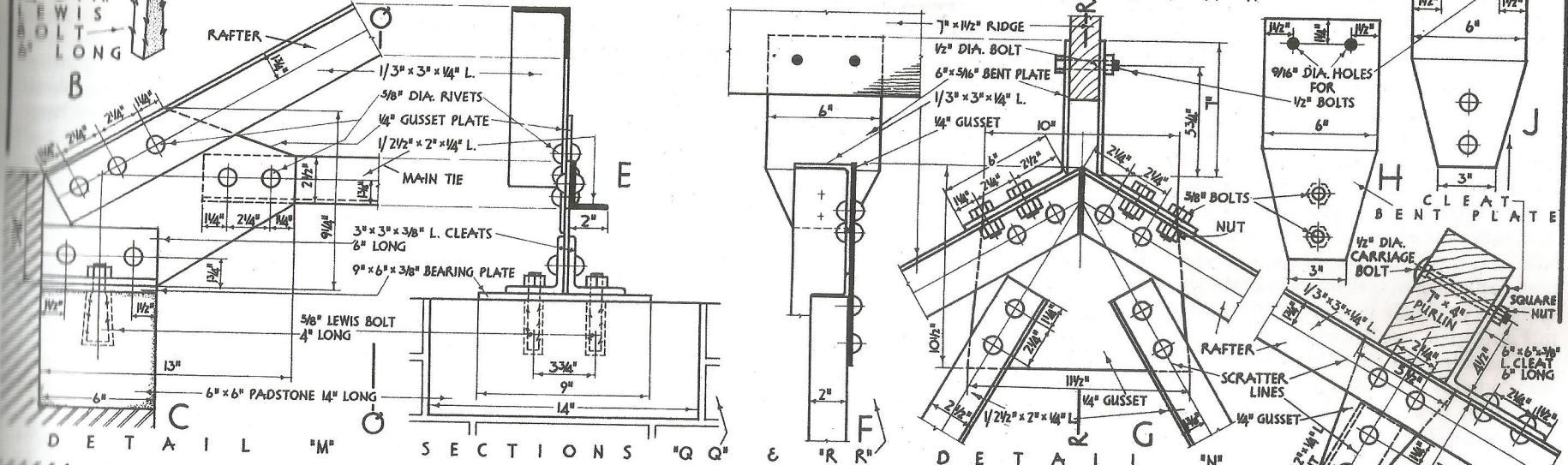


S T E E L R O O F T R U S S

S U I T A B L E F O R A 2 0 - F T S P A N



NOTE: ALL THE MEMBERS OF THE TRUSS ARE 1/4" THICK ANGLES.
ALL RIVETS ARE 5/8" DIA.
ALL GUSSETS ARE 1/4" THICK.

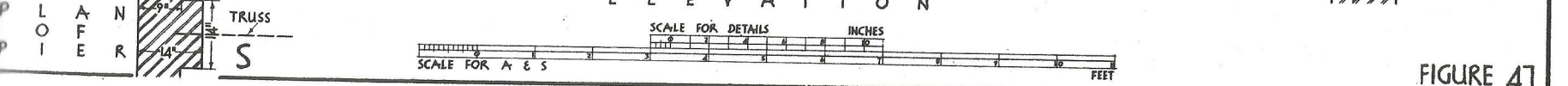
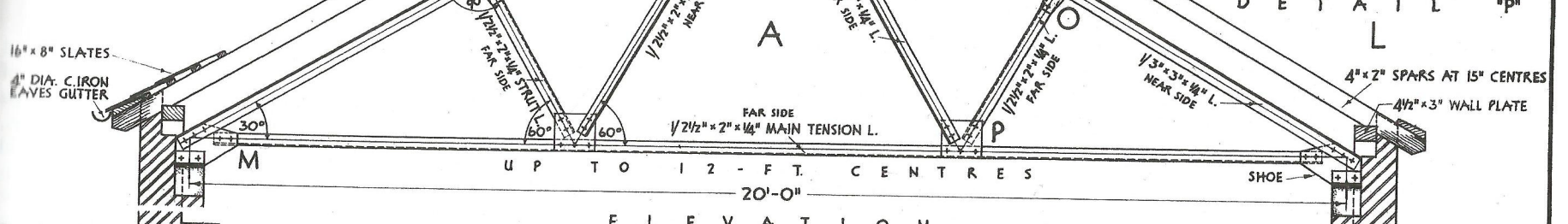


FIGURE 47