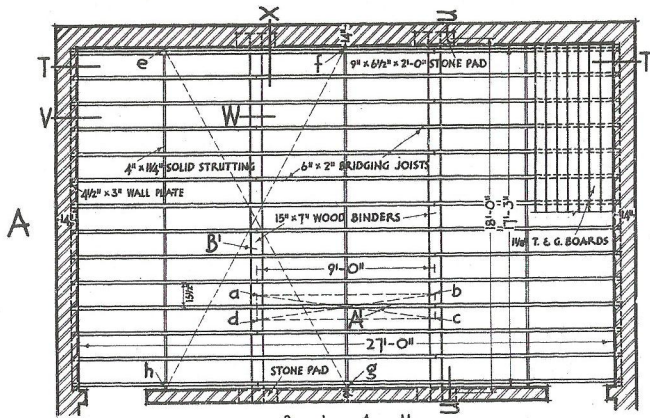


SCALE FOR A, B, C, J, K & L
FEET

SCALE FOR D, E, F, G, H, M, N, O, P, Q, R & S
FEET

D O U B L E F L O O R F R A M E D



NOTE:
A DOUBLE FLOOR CONSISTS OF TWO SETS OF JOISTS, NAMELY BRIDGING JOISTS SUPPORTED BY WOOD OR STEEL BINDERS - SEE "A"

A FRAMED FLOOR CONSISTS OF THREE SETS OF JOISTS, NAMELY BRIDGING JOISTS SUPPORTED BY WOOD OR STEEL BINDERS WHICH ARE SECURED TO STEEL GIRDERS - SEE "J"

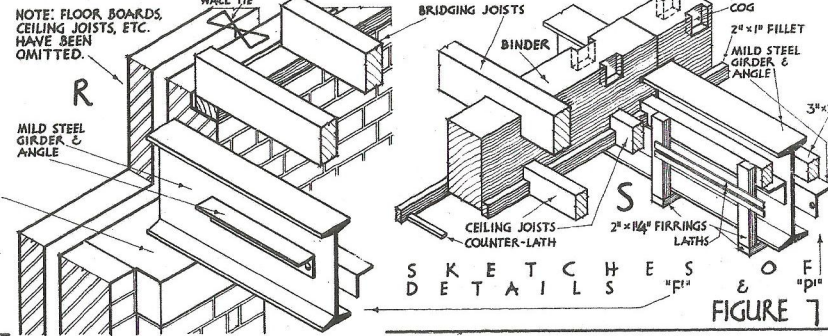
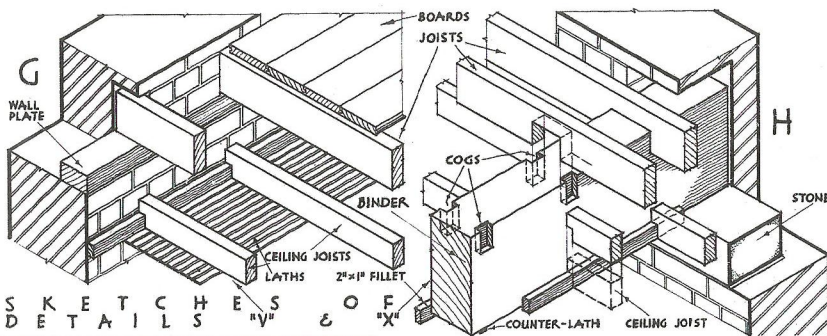
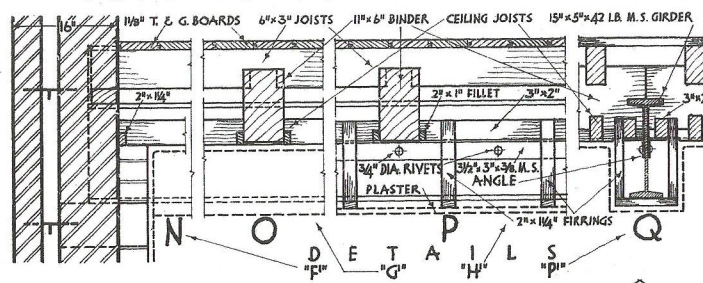
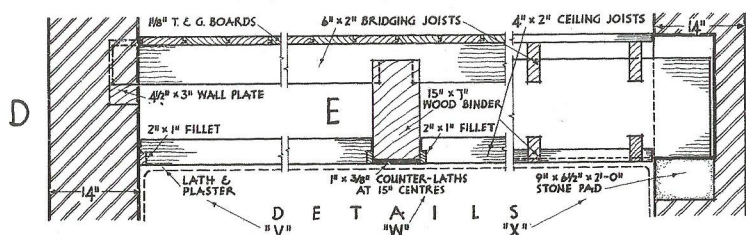
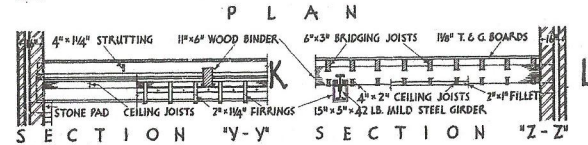
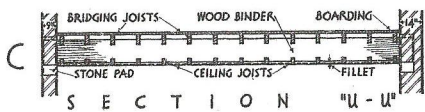
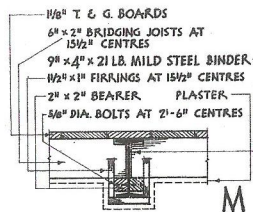
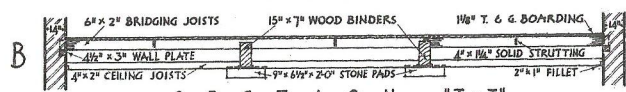
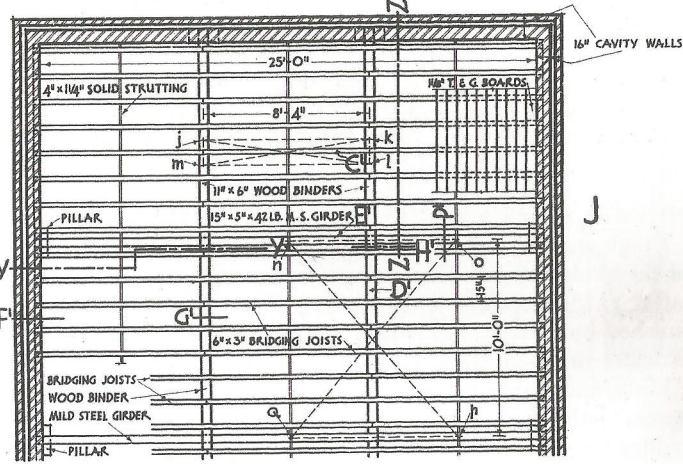


FIGURE 7