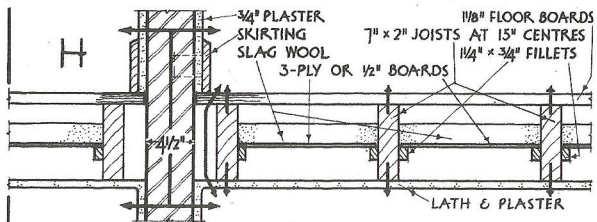
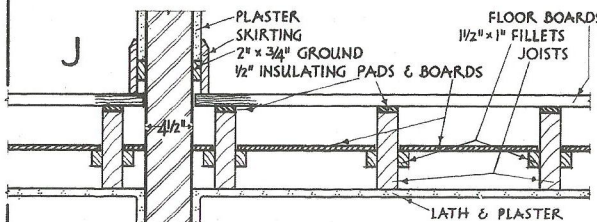


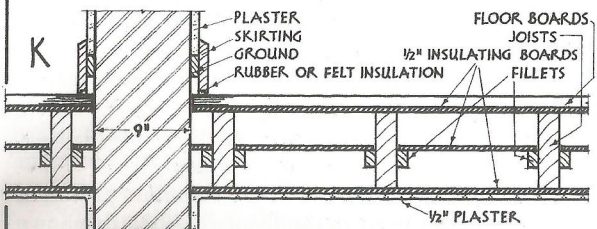
# S O U N D - P R O O F D E T A I L S



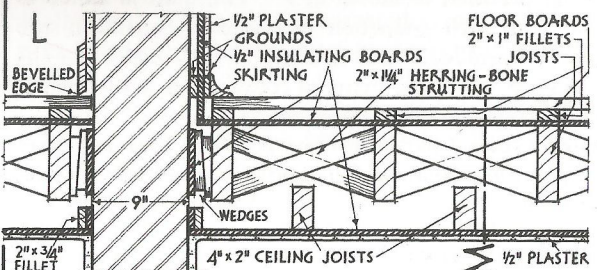
SECTION SHOWING INADEQUATE INSULATION OF FLOOR & WALL. SOUND PATHS ARE INDICATED BY THICK ARROWS



THIS FLOOR INSULATION IS MORE EFFECTIVE THAN THAT AT "H", BUT TRANSMISSION OF SOUND THROUGH WALL NOT REDUCED

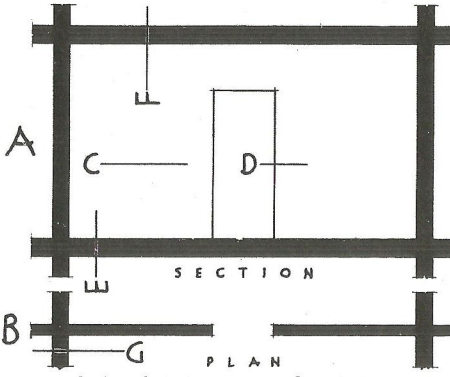


INCREASED EFFICIENCY RESULTS BECAUSE OF THE THREE FLOOR INSULATING LAYERS, THE THICKER WALL & THE SKIRTING INSULATION

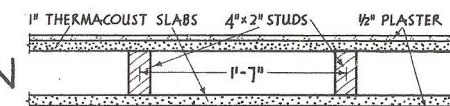


SOUND TRANSMISSION IS EFFECTIVELY REDUCED BECAUSE OF THE INDEPENDENT CEILING & THE INSULATION OF THE FLOOR & WALL

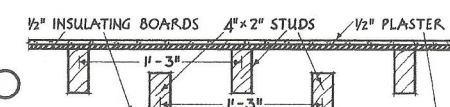
A L T E R N A T I V E  
D E T A I L S A T "G"



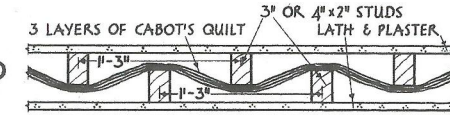
KEY PLAN & SECTION  
OF PART OF BUILDING



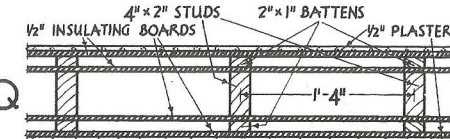
PLAN OF PARTITION OF FIBROUS WOOD CEMENT SLABS, WITH PLASTER FINISH, FIXED TO WOOD STUDS



PLAN OF STAGGERED STUD PARTITION WITH PLASTER FINISHED INSULATING BOARDS

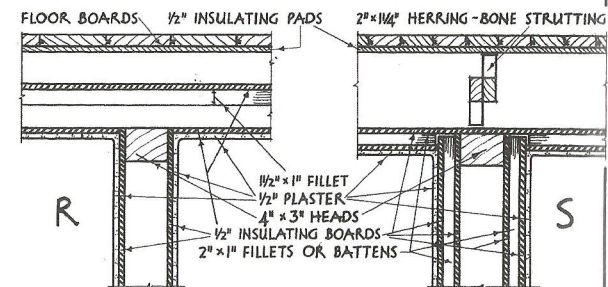


PLAN OF LATHED & PLASTERED STAGGERED STUD PARTITION WITH INTERMEDIATE QUILT HANGING

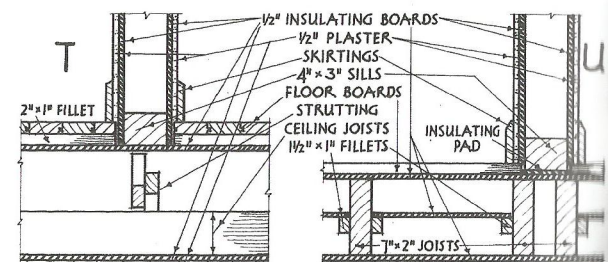


PLAN OF STUD PARTITION SHOWING FOUR LAYERS OF INSULATING BOARDS & 1/2" PLASTER FINISH

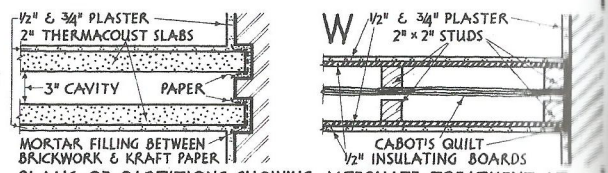
A L T E R N A T I V E  
D E T A I L S  
A T "C"



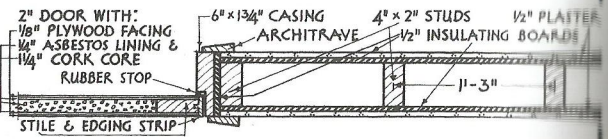
ALTERNATE DETAILS AT "F" THAT AT "R" SHOWS A FLOOR SIMILAR TO "J", WITH CEILING INSULATING BOARDS, & HEAD OF PARTITION AT "X" THAT AT "S" SHOWS HEAD OF PARTITION "Q" & CEILING INSULATING BOARDS SECURED TO FILLETS AT 15" CENTRES



ALTERNATE DETAILS AT "E" THAT AT "T" SHOWS SECTION "M" OF FLOOR "L" & SILL OF PARTITION "X". THE PARTITION AT "U" IS SHOWN PARALLEL TO THE JOISTS & INSULATED FROM THE FLOOR



PLANS OF PARTITIONS SHOWING ALTERNATE TREATMENT AT JUNCTIONS. THAT AT "V" SHOWS THE LEAVES SET IN CHASES & THE JUNCTION AT "W" IS TIGHTLY CAULKED BY QUILT



D E T A I L "D"



FIGURE 14