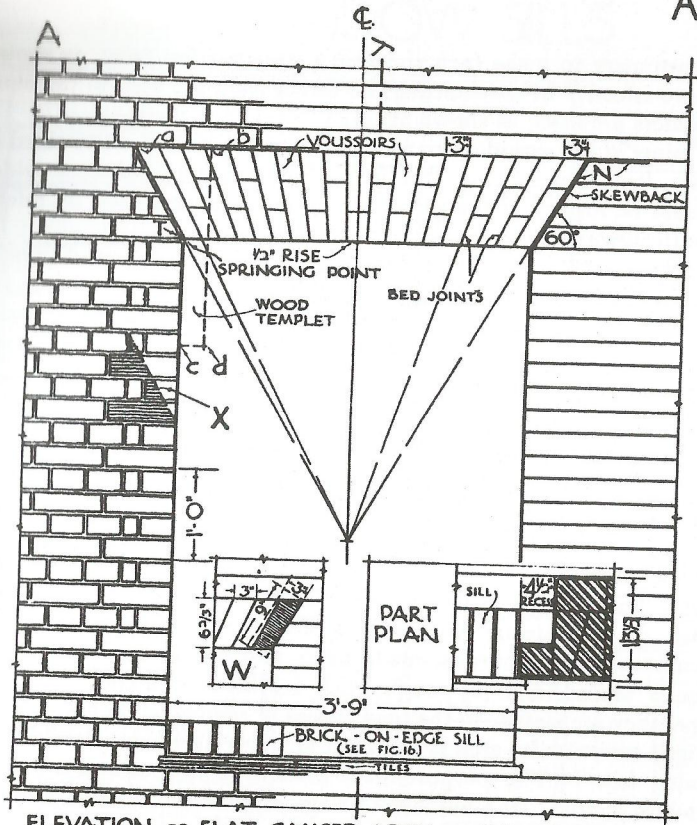
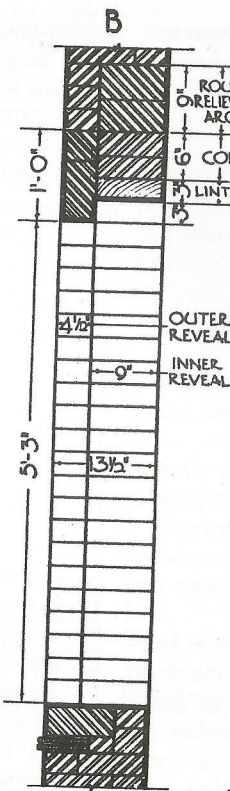


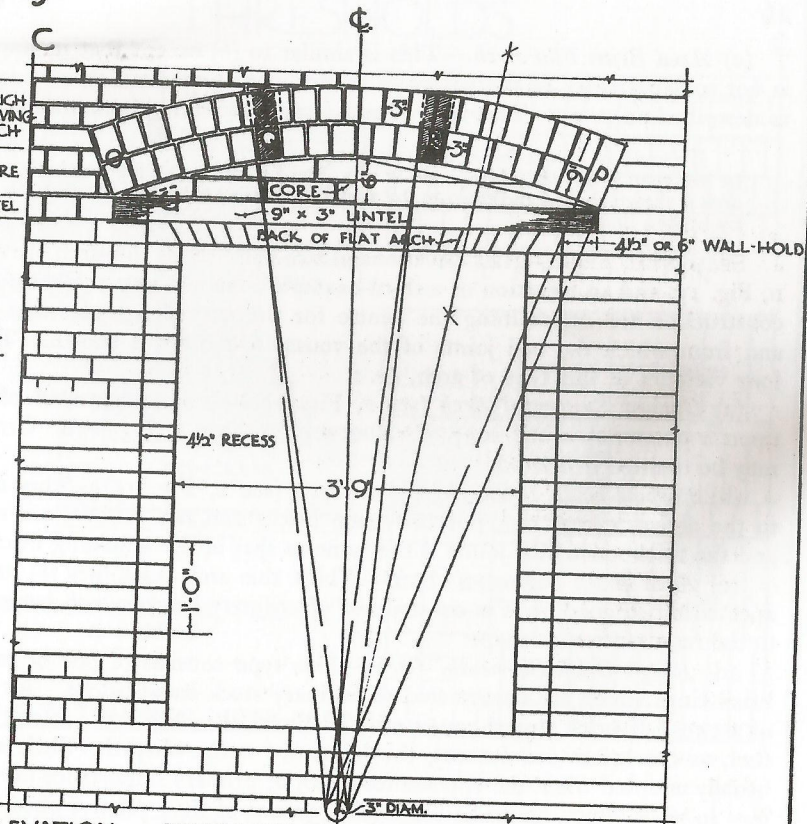
ARCHES



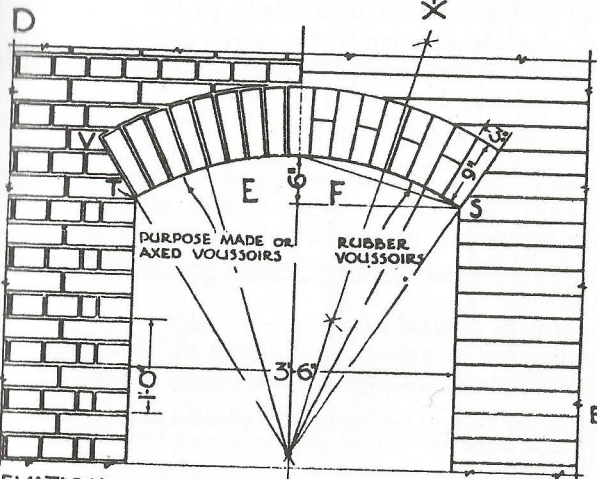
ELEVATION OF FLAT GAUGED ARCH AT WINDOW 'A' (FIG. 14)



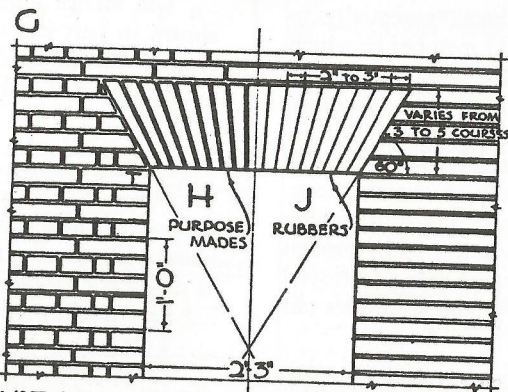
SECTION XY



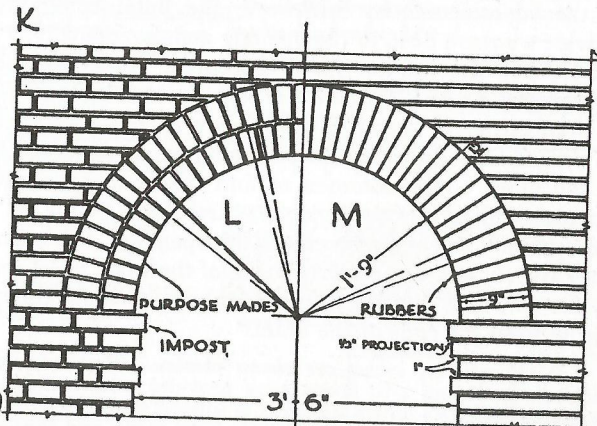
ELEVATION OF ROUGH RELIEVING ARCH AT WINDOW 'A' (FIG. 14)



ELEVATION OF SEGMENTAL ARCH (ALTERNATIVE TO ARCH 7C)



ELEVATION OF FLAT ARCH AT WINDOW 'B' (FIG. 14)



ELEVATION OF SEMI-CIRCULAR ARCH AT DOOR 'C' (FIG. 14)

