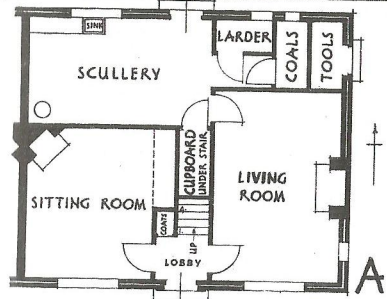
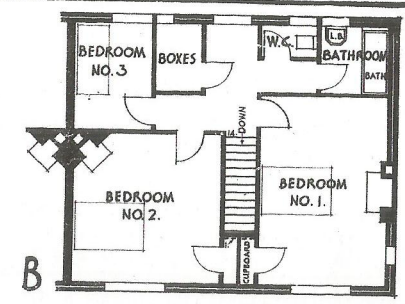


STRAIGHT FLIGHT STAIR



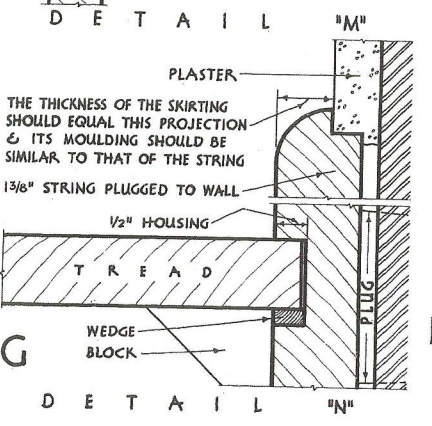
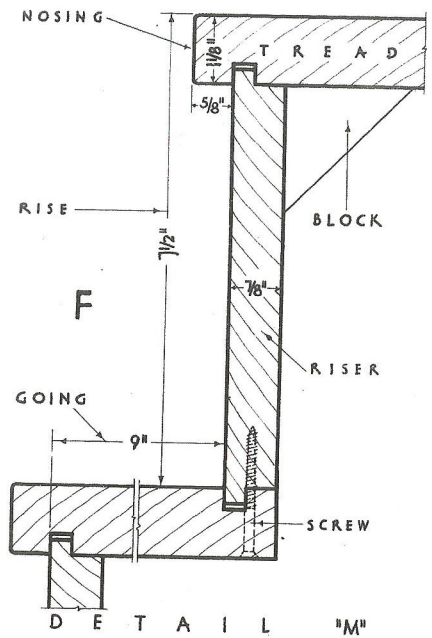
KEY GROUND FLOOR PLAN OF SEMI-DETACHED HOUSE



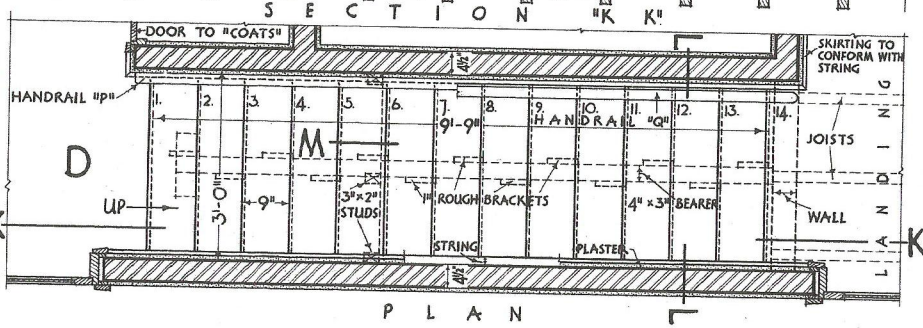
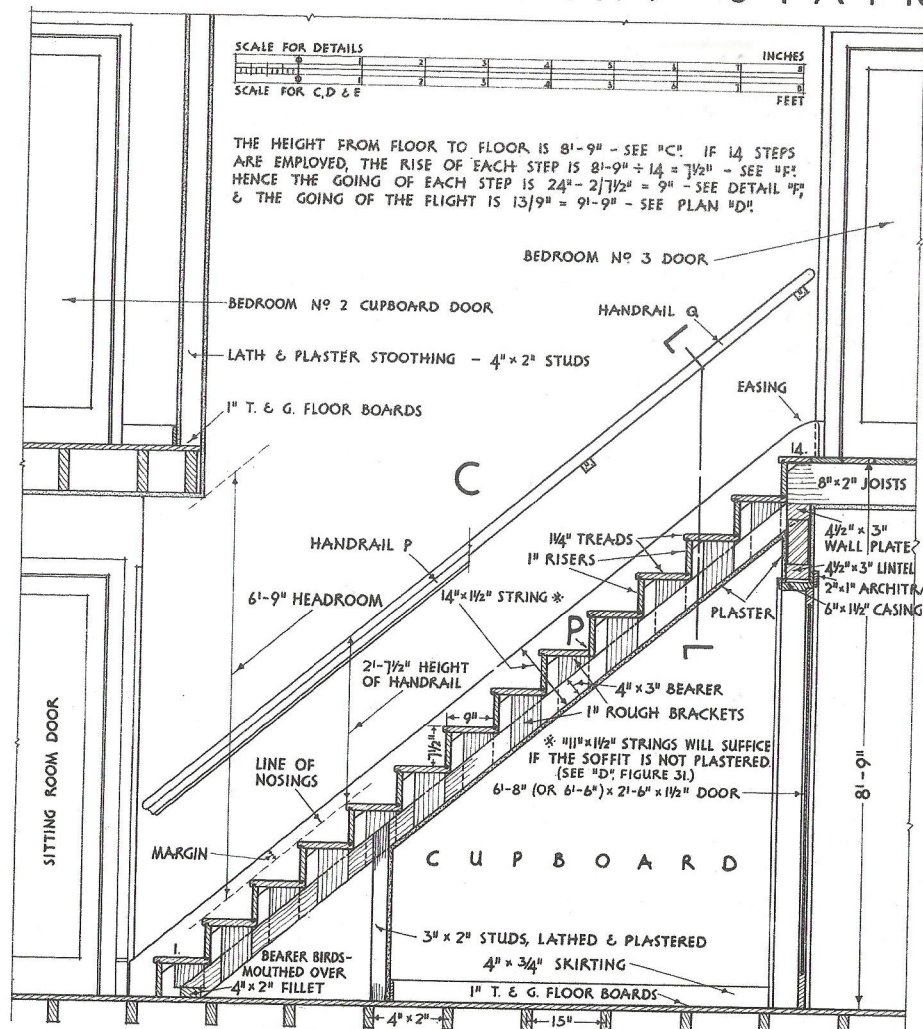
FIRST FLOOR PLAN



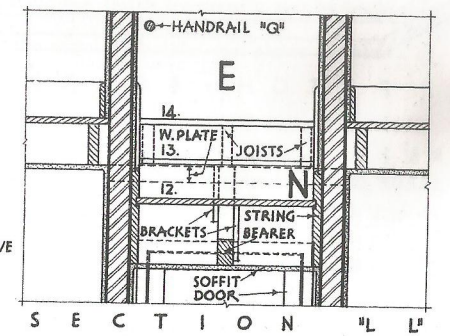
THE HEIGHT FROM FLOOR TO FLOOR IS 8'-9" - SEE "C". IF 14 STEPS ARE EMPLOYED, THE RISE OF EACH STEP IS $8'-9" \div 14 = 7\frac{1}{2}"$ - SEE "F". HENCE THE GOING OF EACH STEP IS $24" - 2 \times 7\frac{1}{2}" = 9"$ - SEE DETAIL "F" & THE GOING OF THE FLIGHT IS $13 \times 9" = 9'-9"$ - SEE PLAN "D"



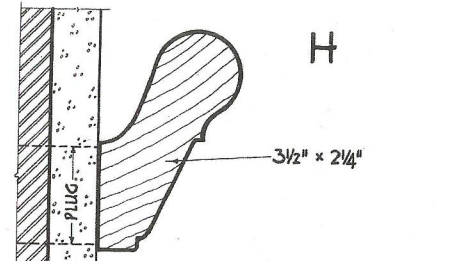
THE THICKNESS OF THE SKIRTING SHOULD EQUAL THIS PROJECTION & ITS MOULDING SHOULD BE SIMILAR TO THAT OF THE STRING



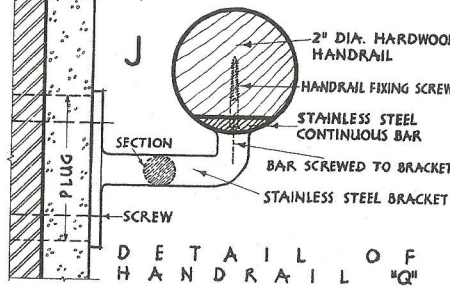
SECTION "K K" and PLAN



SECTION "L L"



DETAIL OF HANDRAIL "P"



DETAIL OF HANDRAIL "Q" AS ALTERNATIVE TO HANDRAIL AT "H"