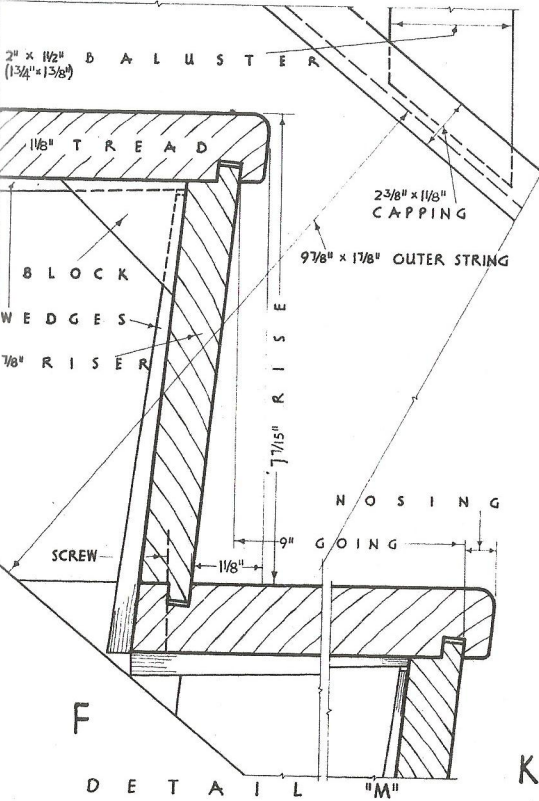
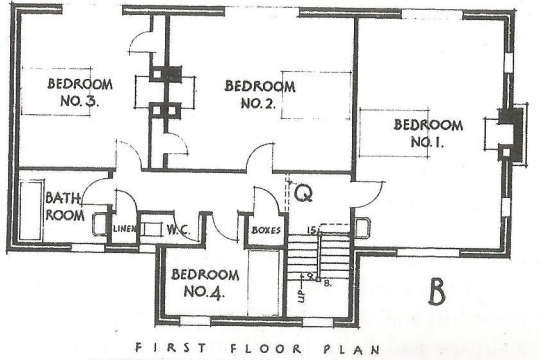
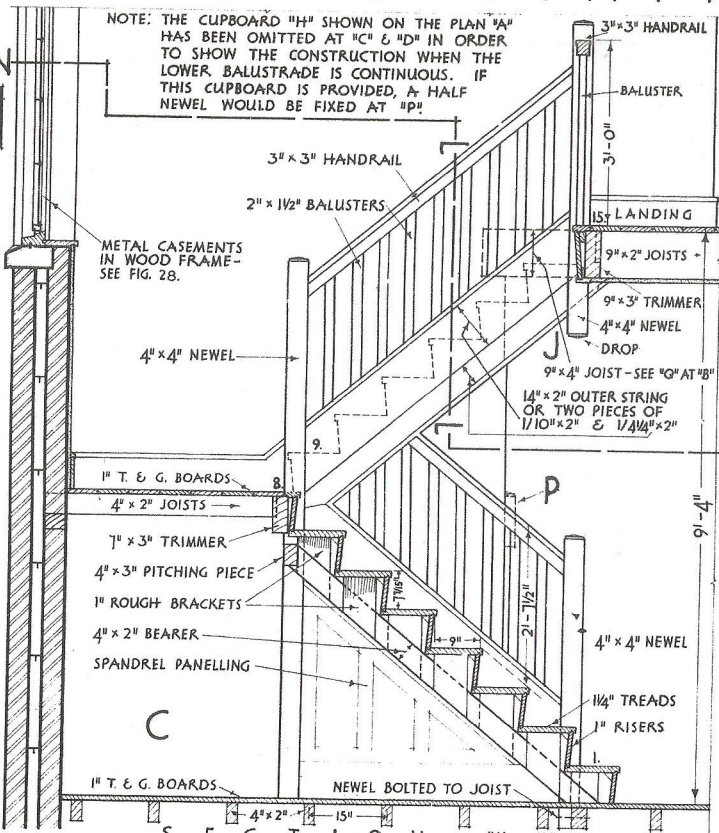
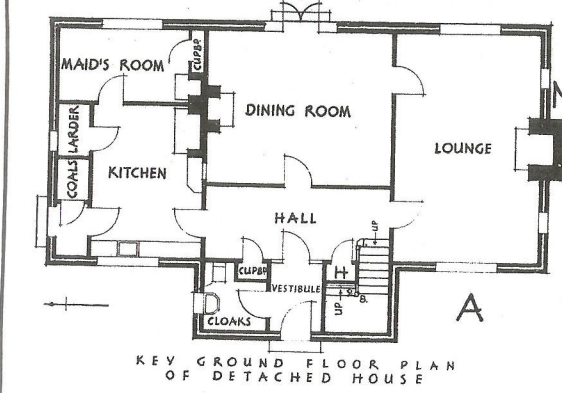


DOG-LEG STAIR



THE HEIGHT FROM FLOOR TO FLOOR IS 9'-4" - SEE "C". USING 15 STEPS, THE RISE OF EACH IS 9'-4" ÷ 15 = 7 1/16" - SEE "F". AS SHOWN AT "E" THE GOING IS 9" & THIS CONFORMS TO THE RULE "TWICE RISE PLUS GOING EQUALS 23" TO 24".

SCALE FOR F & G

SCALE FOR C, D & E

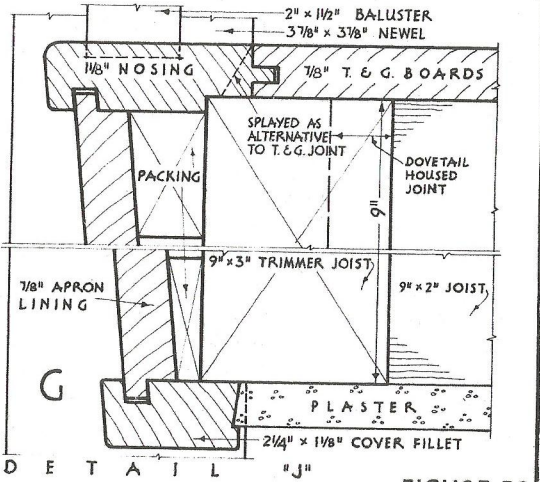
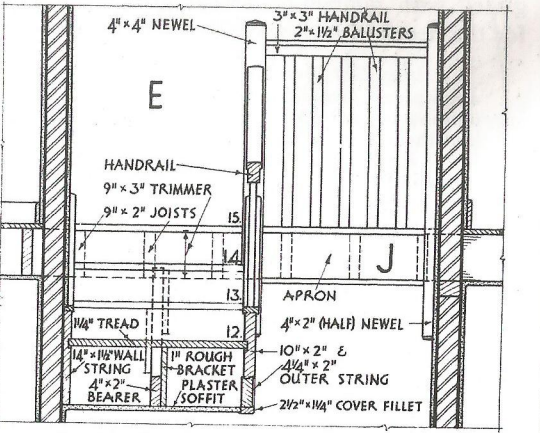
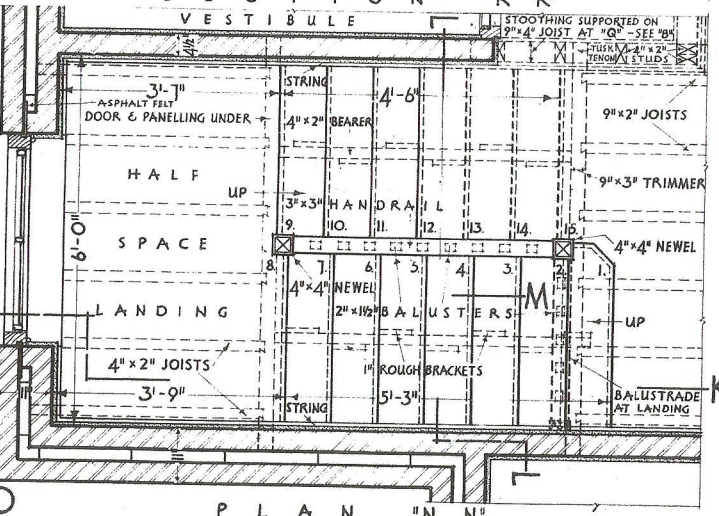


FIGURE 32