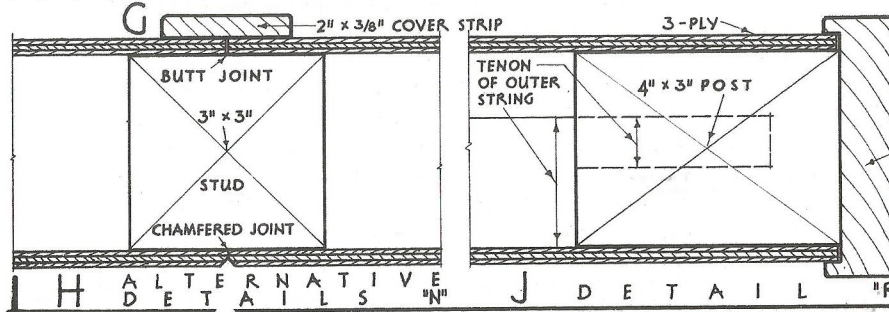
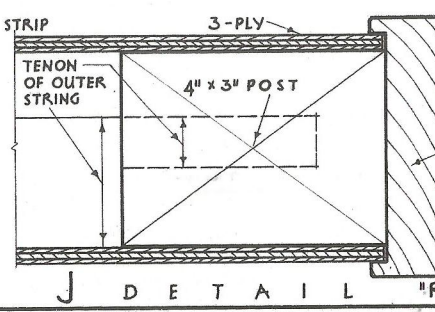


1" T. & G. BOARDS
ON 3" x 2 1/2" SPLAYED
FILLETS AT 15" CENTRES
ON 6" CONCRETE

SKETCH OF A DOGLEGG STAIR WITH A PANELLED BALUSTRADE

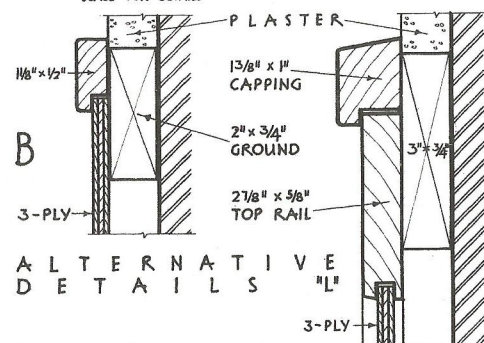


ALTERNATIVE DETAILS "N"

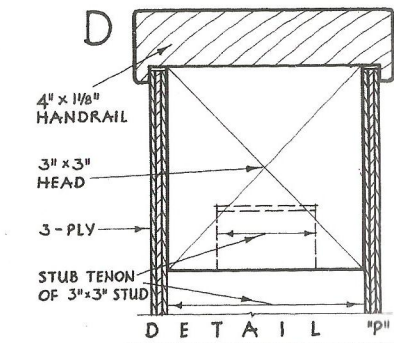


DETAIL "R"

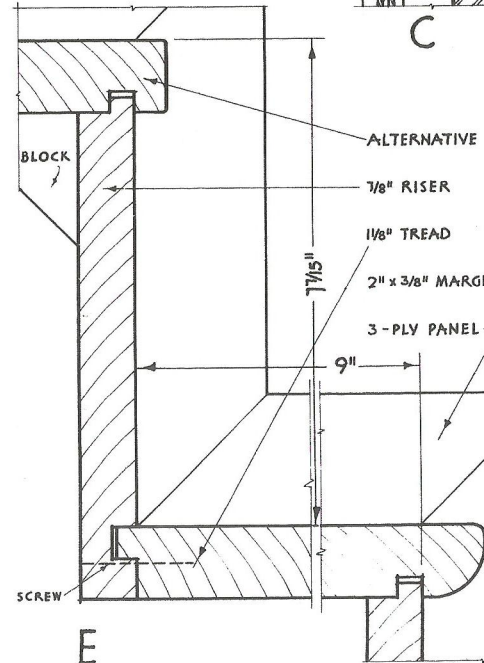
DOG-LEG STAIR



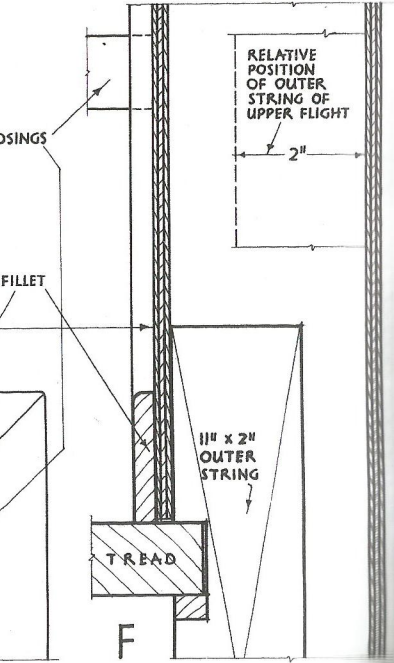
ALTERNATIVE DETAILS "L"



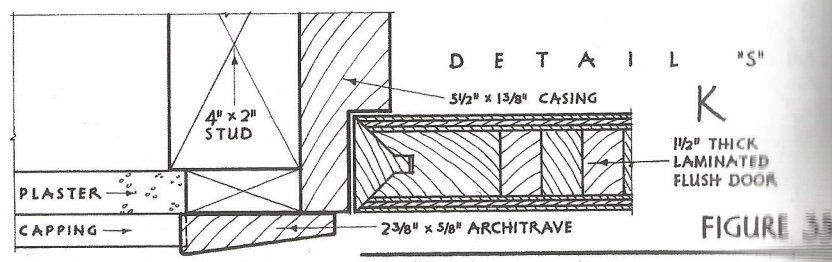
DETAIL "D"



DETAIL "M"



DETAIL "F"



DETAIL "S"

FIGURE 35