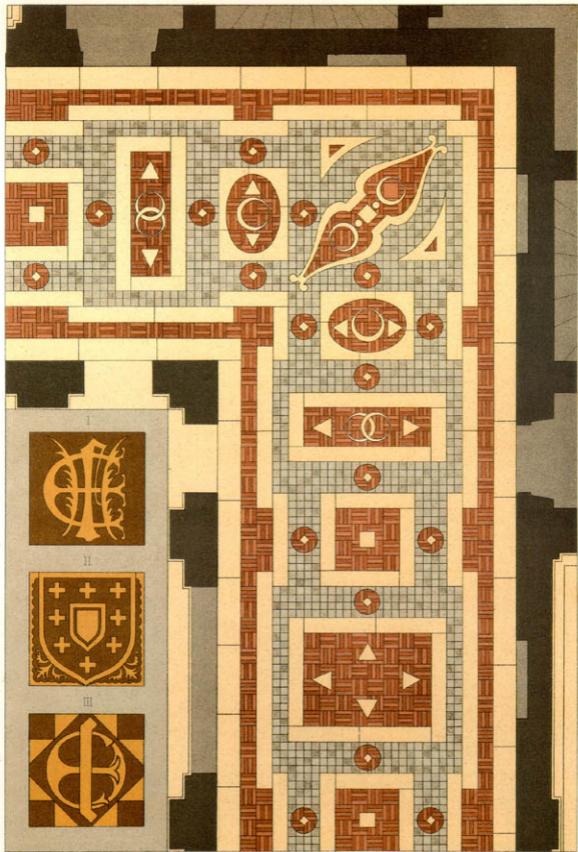


Echelle de 0,03 p.m.

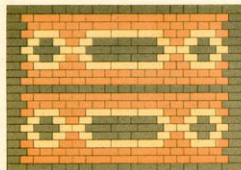
PLATE 5: Windows.



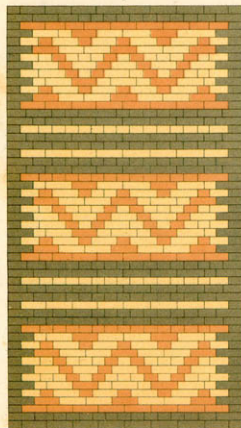
Echelle de 0.05 pour mètres

PLATE 6: Brick patterns in the Château d'Anet (1548; Eure-et-Loir *département*).

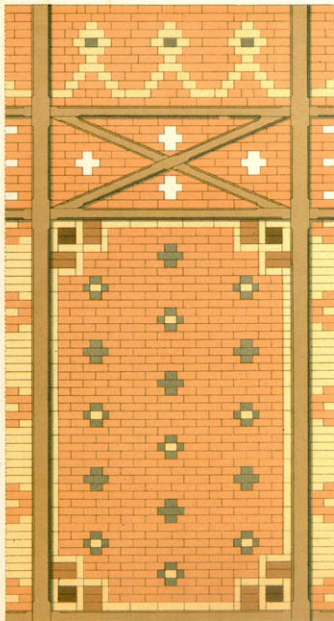
1



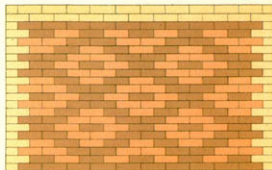
4



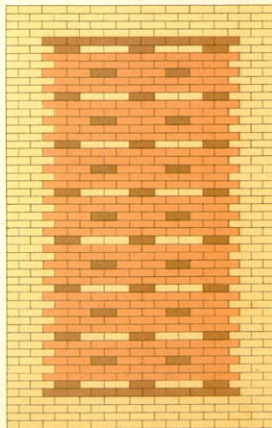
2



3



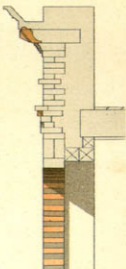
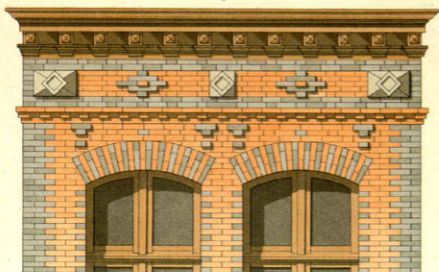
5



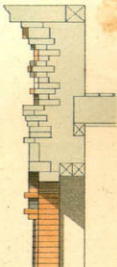
Echelle de 0.05° p. m.

PLATE 7: Brick panels, from pavilions at the Exposition Universelle (World's Fair, Paris) of 1878.

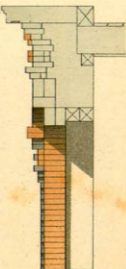
1



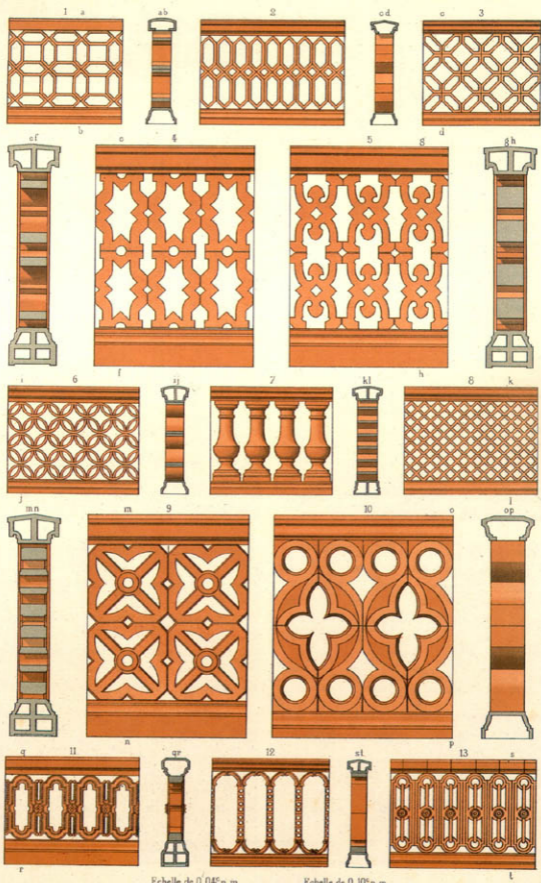
2



3



Echelle de 0,04 p.m.



Echelle de 0,04^e p. m. — Echelle de 0,10^e p. m.

PLATE 12: Terra-cotta balustrades, from models displayed at the Exposition Universelle of 1878.

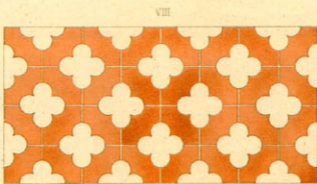
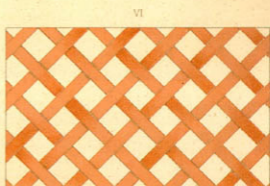
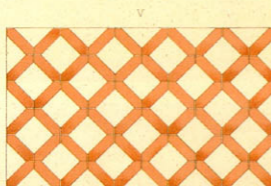
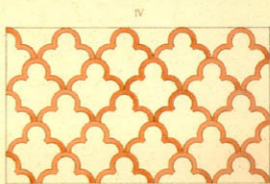
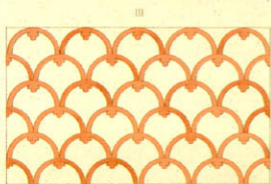
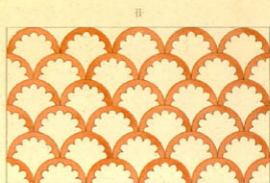
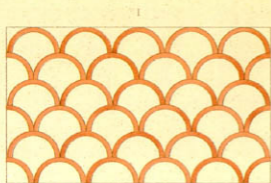
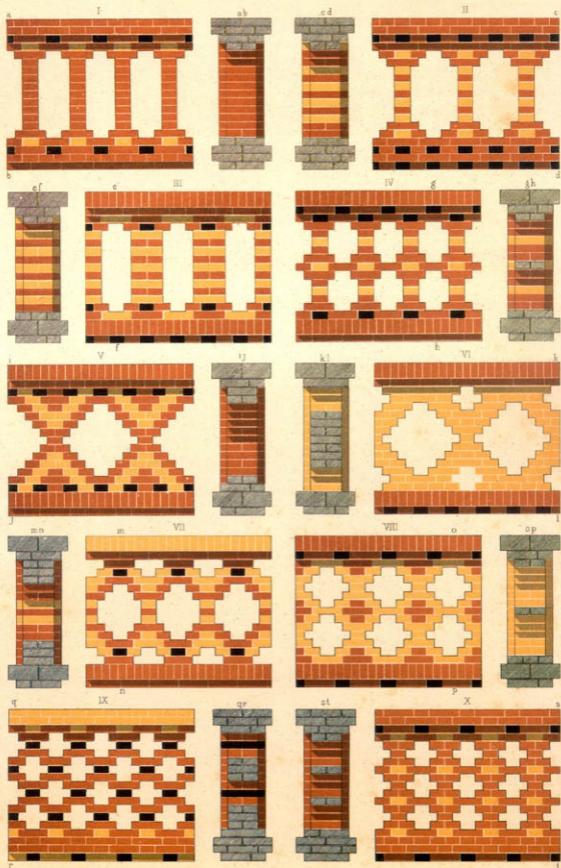


PLATE 13: Openwork in walls.



Echelle de 0,05^m pour mètre

PLATE 14: Openwork balustrades.

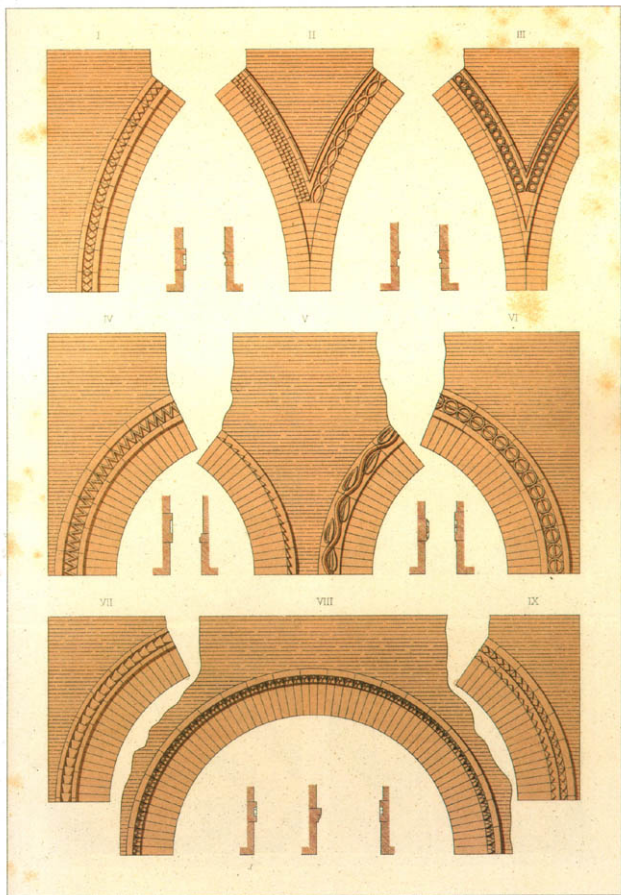


PLATE 17: Archivolts (arch moldings), from Rome.

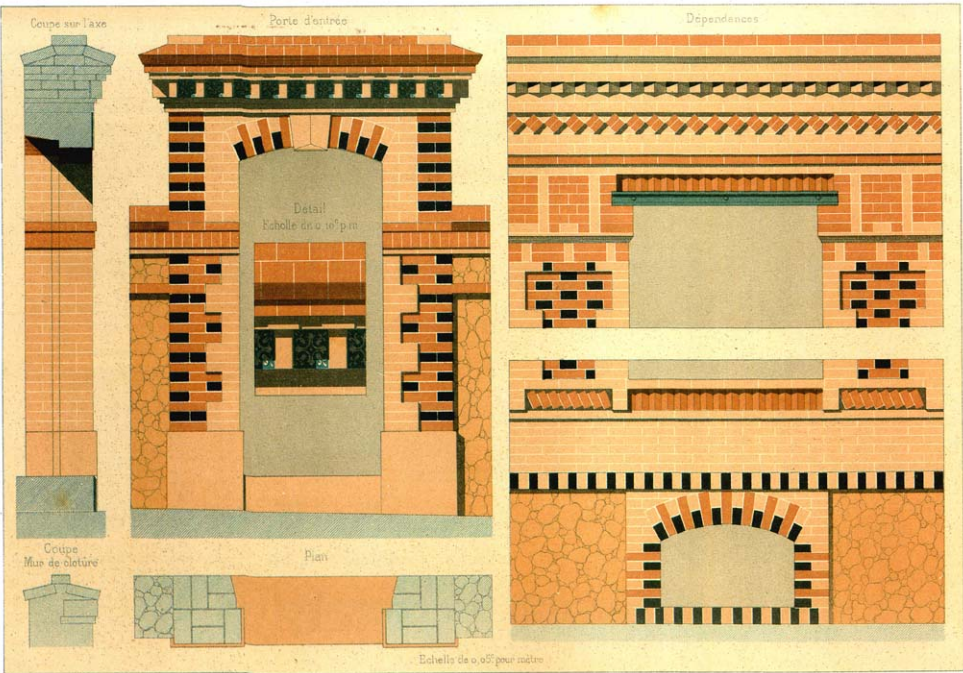


PLATE 21: House in Sèvres (Paris); architect: Cantagrel.

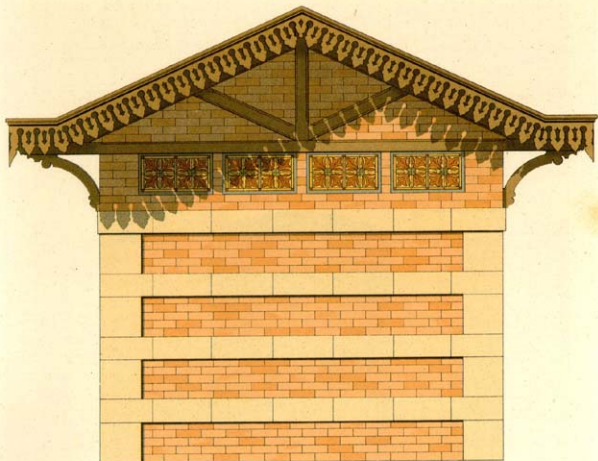


PLATE 22: Windows.



Echelle de 0,05^m pour mètre

PLATE 23: Window in the restaurant of the abattoir of La Villette (Paris); architect: Janvier.

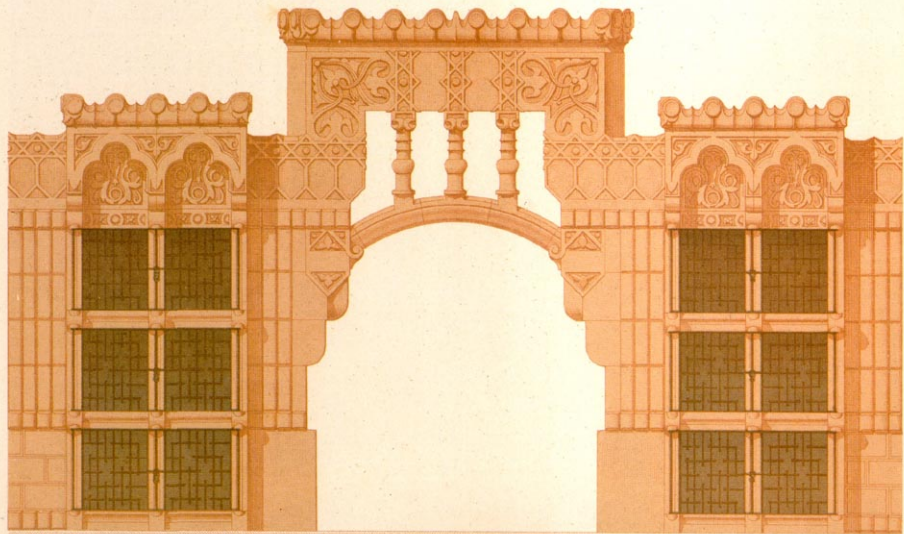


Echelle de 0,04^e pour mètre



Echelle de 0,10^e pour mètre

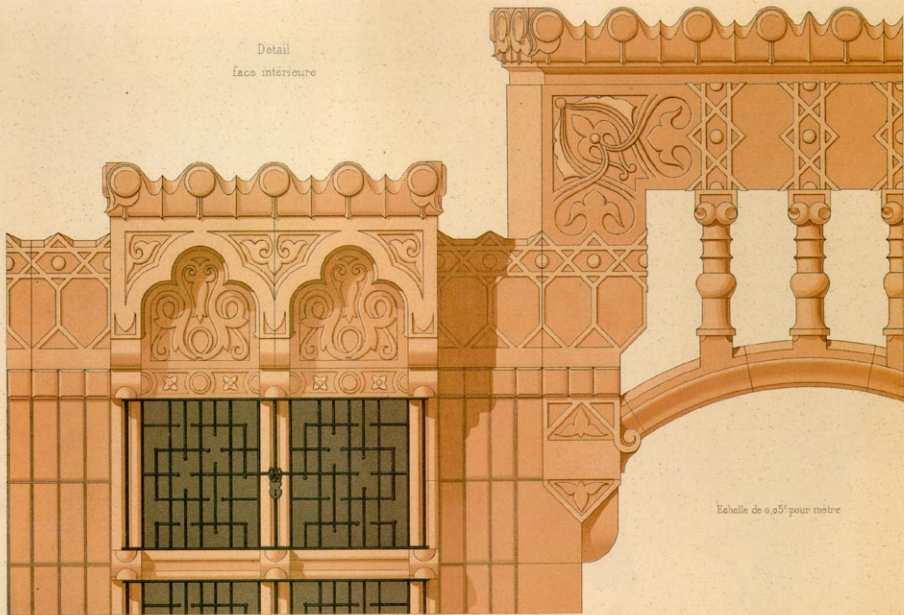
Élévation



Echelle de 0,025 pour mètre

PLATE 25: Rabbit house, Bois de Boulogne zoo (Paris); architect: Simonet.

Detail
face intérieure



Echelle de 0,05^e pour mètre

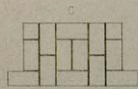
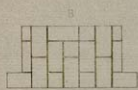
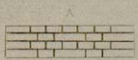
PLATE 26: Rabbit house, Bois de Boulogne zoo (Paris); architect: Simonet.



Echelle de 0,04 pour mètre.

PLATE 27: Champ de Mars railroad station, Exposition Universelle, 1878; architect: J. Lisch.

Couronnement de fenêtre
Rez de Chaussée
Echelle de 0,30^e p. m.



0,65 p. m.

PLATE 28: House in Berlaimont (Nord département).

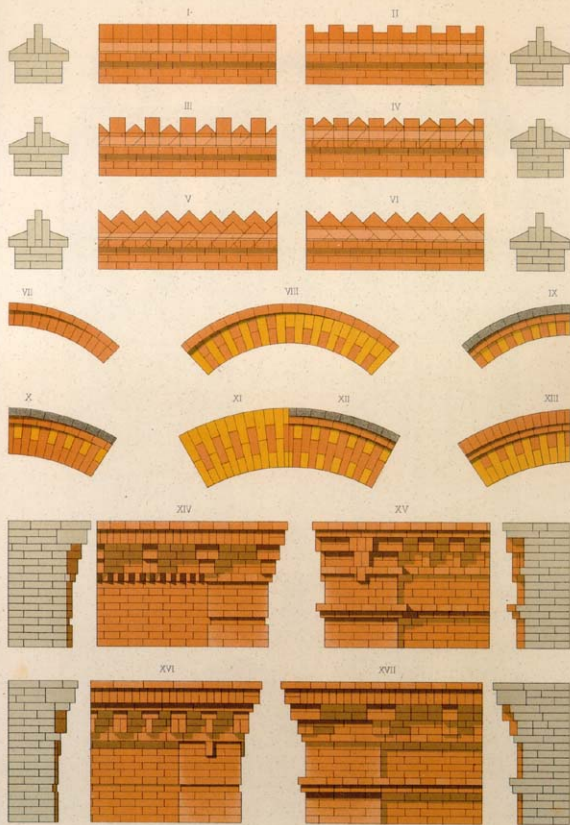
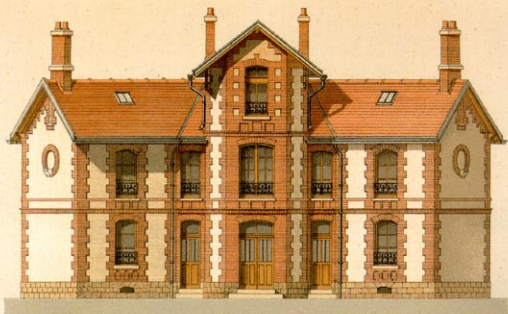
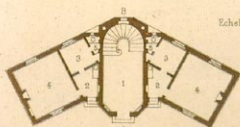


PLATE 29: Capstones, arches and cornices, from western France.

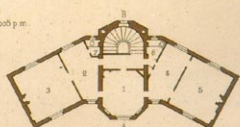
Elevation A (0^m01 p.m.)



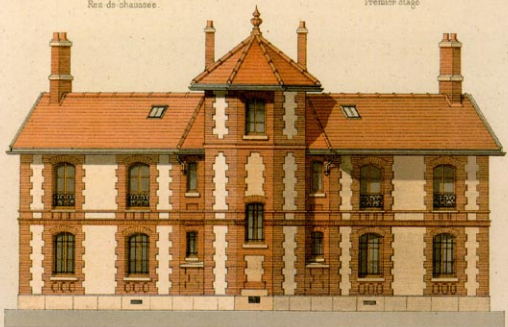
Plans
Echelle de 0,005 p.m.



Rez de chaussée.



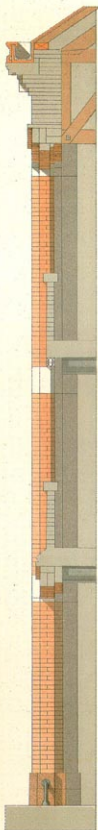
Premier étage



Elevation B (0^m01 p.m.)

Elévation

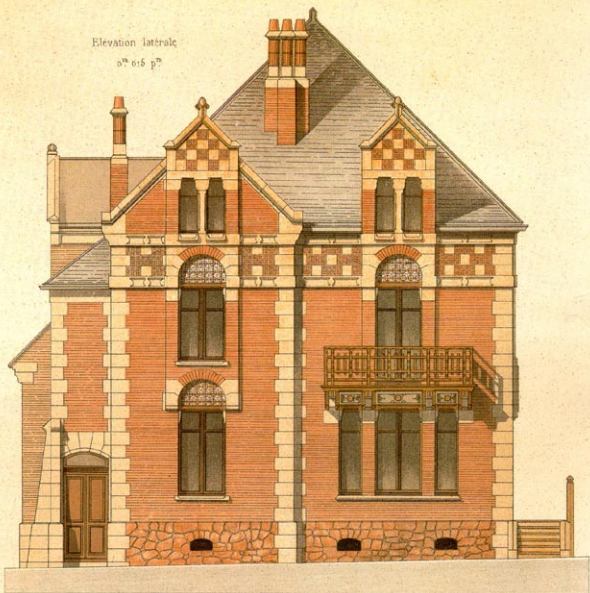
Coupe



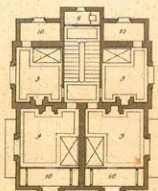
Echelle de 0,025 p.m.

Elevation latérale

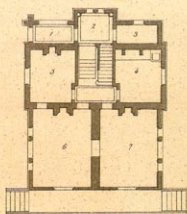
0^m 615 p^m



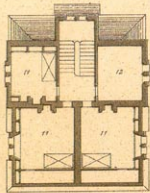
1^{er} Etage



Plans
Rez de chaussée



Combles



Echelle de 0,005 p^m

Goupe

Détail d'un Pignon
0,03^e p m

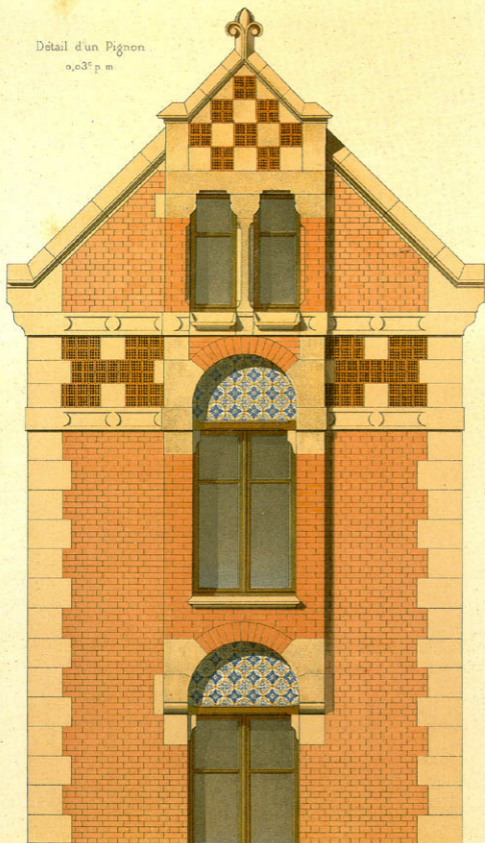
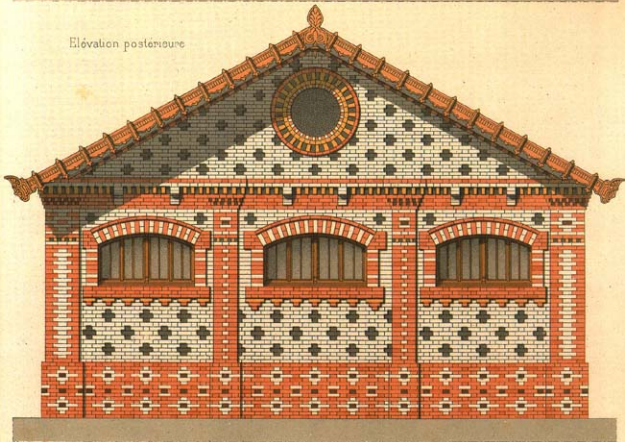


PLATE 36: House in Maurecourt; architect: Simonet.

Elevation principale



Elevation postérieure



Echelle de 0,02 pour metre

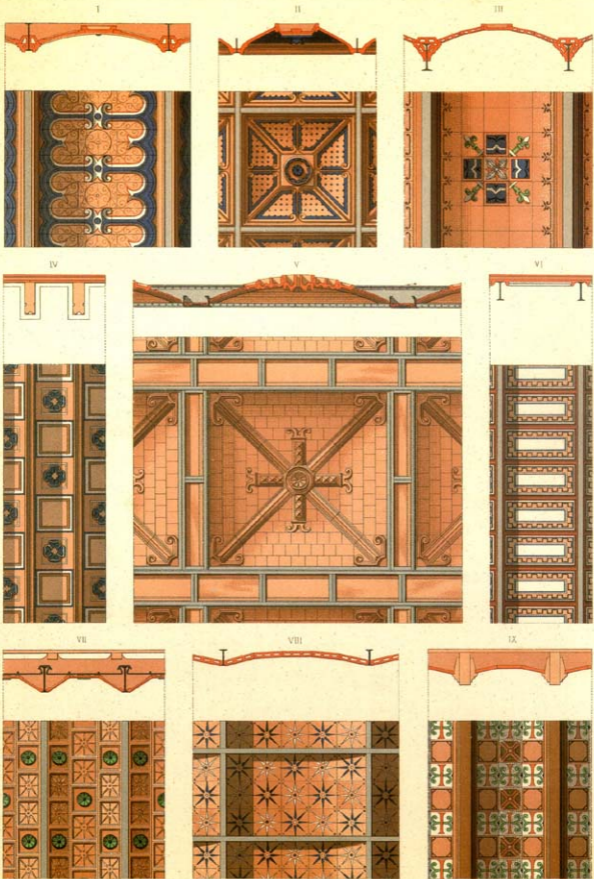


PLATE 38: Nine terra-cotta ceiling patterns.

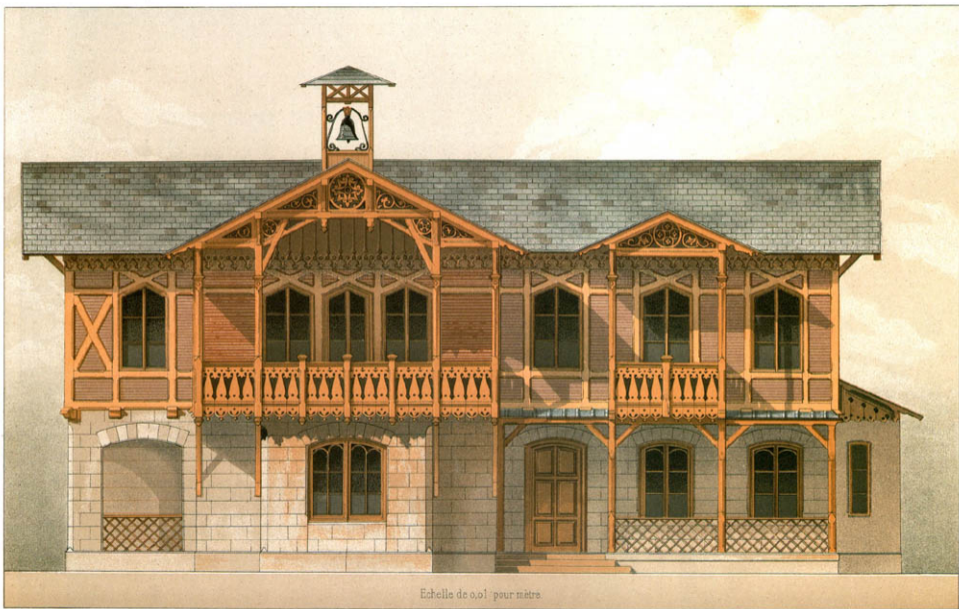
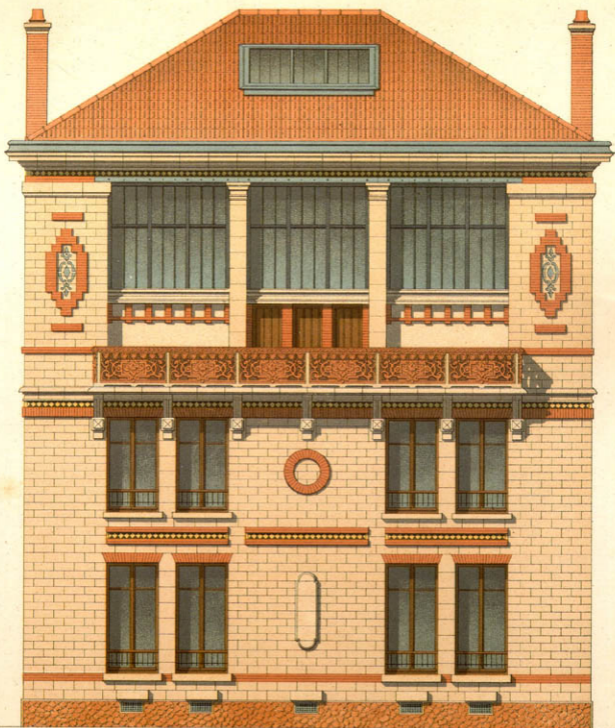


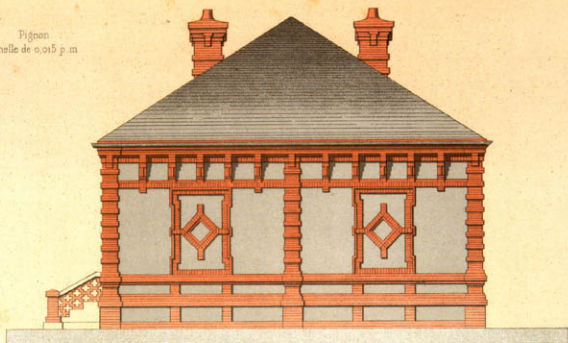
PLATE 39: Small railroad station near Munich.

Elevation
(face d'angle)

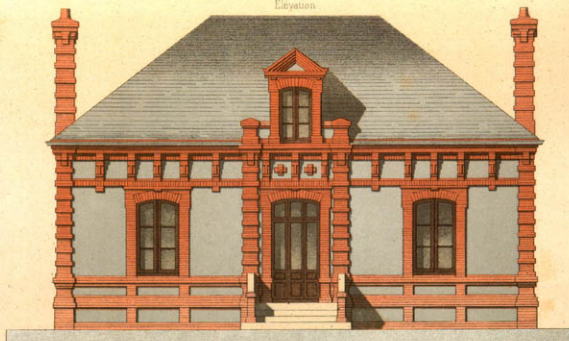


7 Echelle de 0,015 pour metre

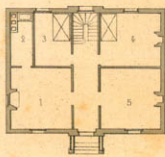
Figuron
Echelle de 0,015 p. m.



Elevation



Plan du Rez-de-Chaussée



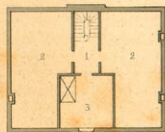
0,005 p. m.

Détail de la Corniche

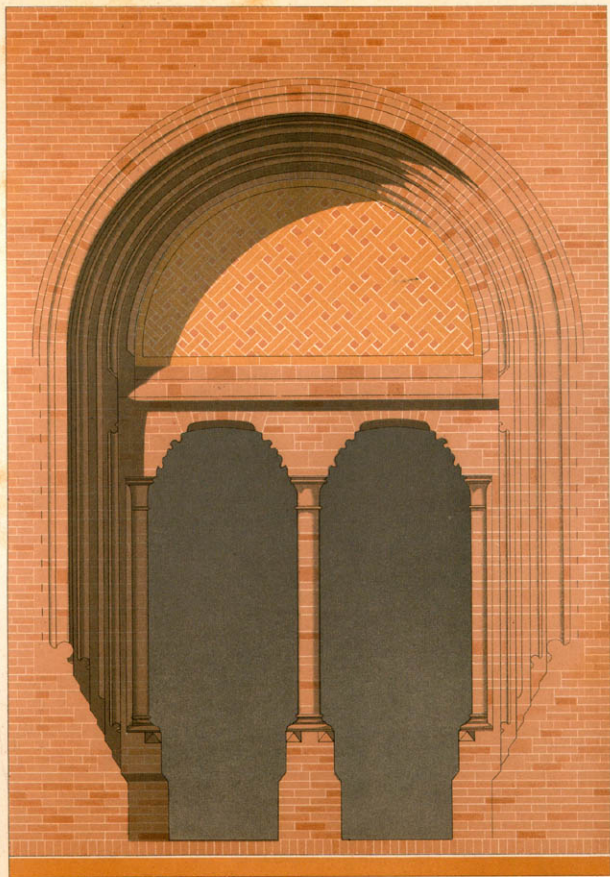


0,05 p. m.

Plan du Grenier



0,005 p. m.



Echelle de 0^m 05^e pour mètre.

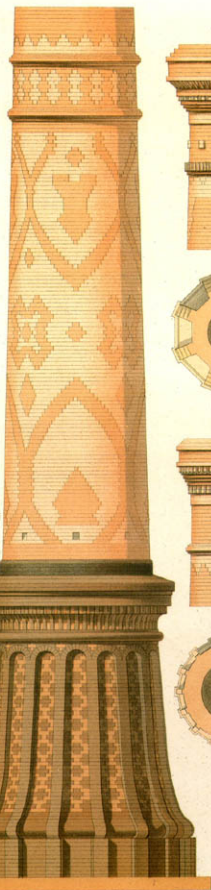
PLATE 42: Porch in Dutch style, Exposition Universelle of 1878; builder: N. Van Heukelum.

Pignon
Avenue de Wagram

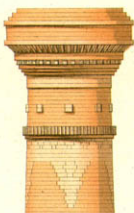


Echelle de 0.02^e pour mètre

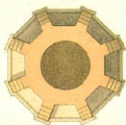
Austria-Hungary
0,005 p. m.



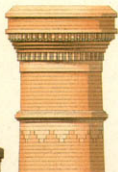
Détails
0^m02 p. m.



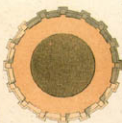
Plan



0^m01 p. m.



Plan



0^m01 p. m.

Suisse
0,005 p. m.

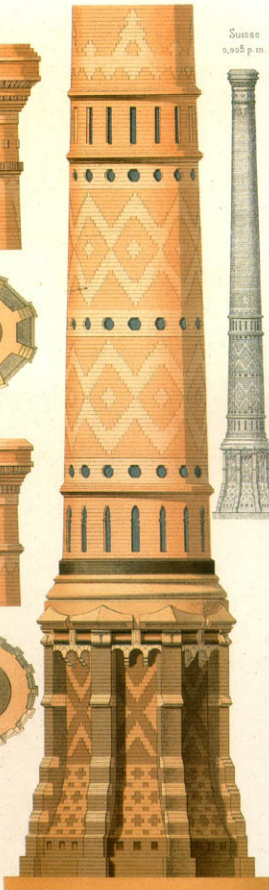


PLATE 44: Factory smokestacks, Exposition Universelle of 1878; builder: Joachim.

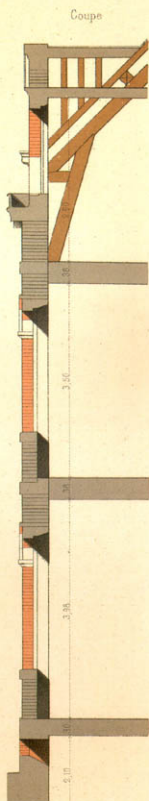
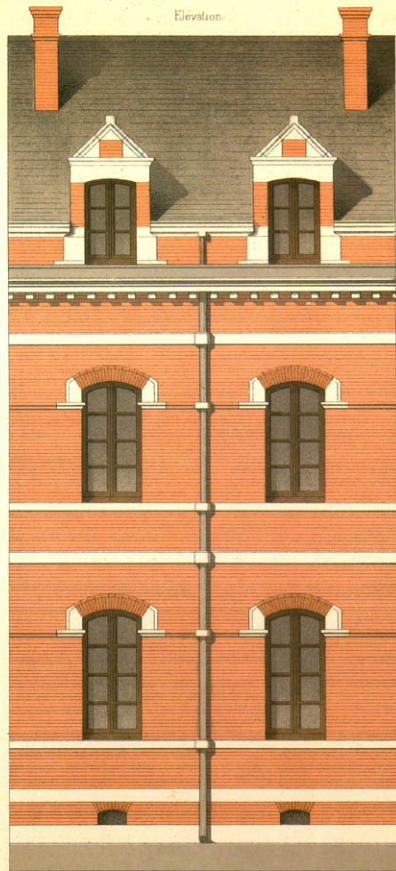


11



Echelle de 0,25 pour metre

PLATE 45: Tile patterns by the English firm Minton displayed at the Exposition Universelle of 1867.



Echelle de 0.02^m pour metre.

PLATE 47: Main building on the courtyard, hospital of Gisors; architect: C. Questel.

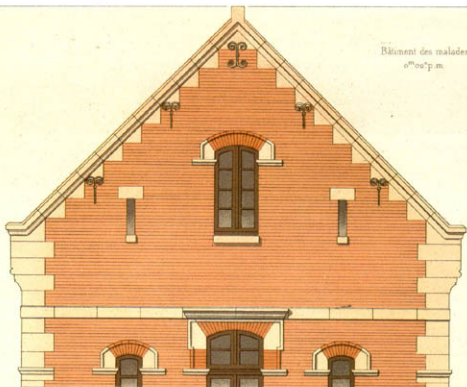


PLATE 48: Gables, hospital of Gisors; architect: C. Questel.



Echelle de 0,015 pour mètre.

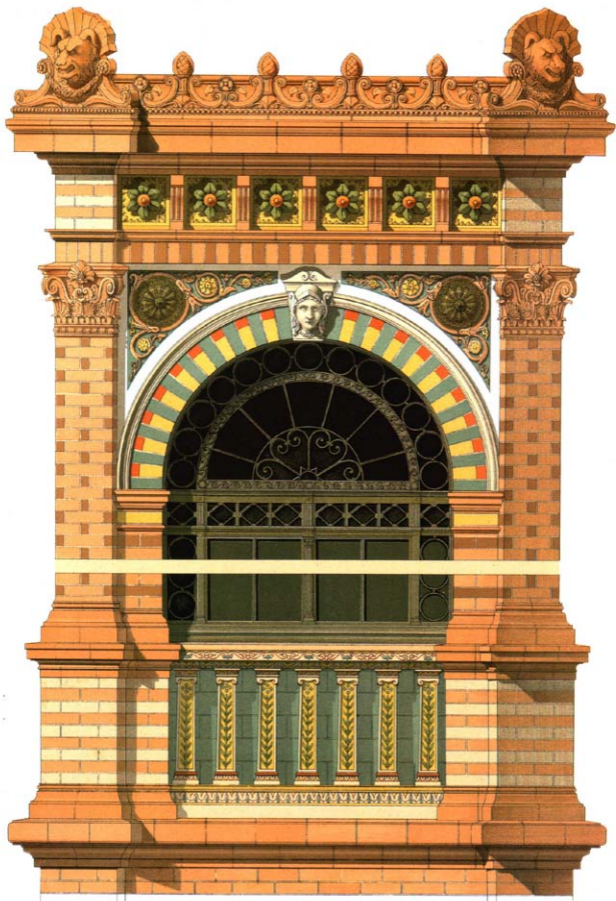
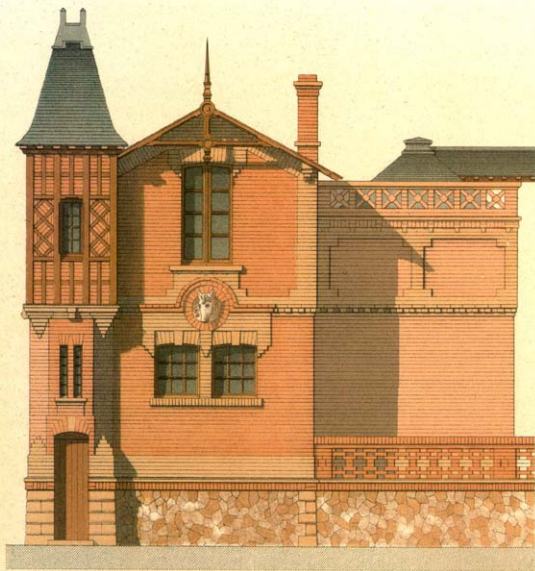


PLATE 51: Ceramic pavilion, Exposition Universelle of 1878; architect: Deslignières.

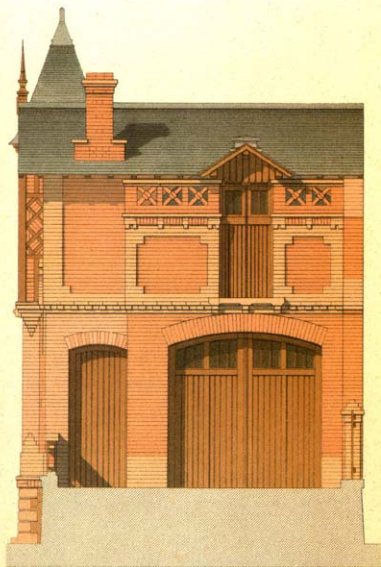


PLATE 52: Ceramics pavilion, Exposition Universelle of 1878; architect: Designières.

Elevation B



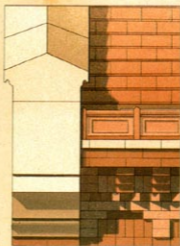
Elevation C



Echelle de 0,00 p.m.

Détail Perspectif

Coups



Face latérale



0^m5 p m

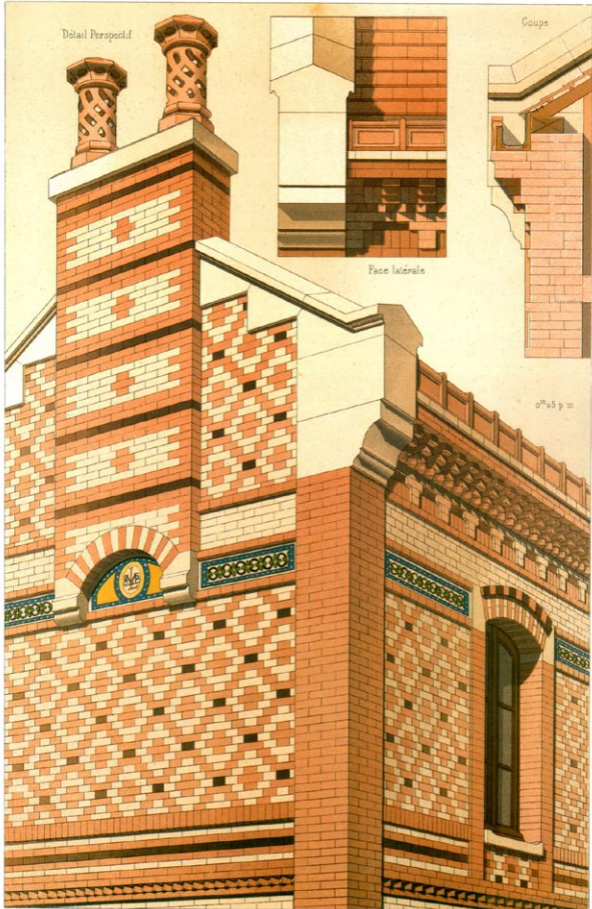


PLATE 55: Gardener's house at Bagneux (Paris); architect: Pierre Chabat.

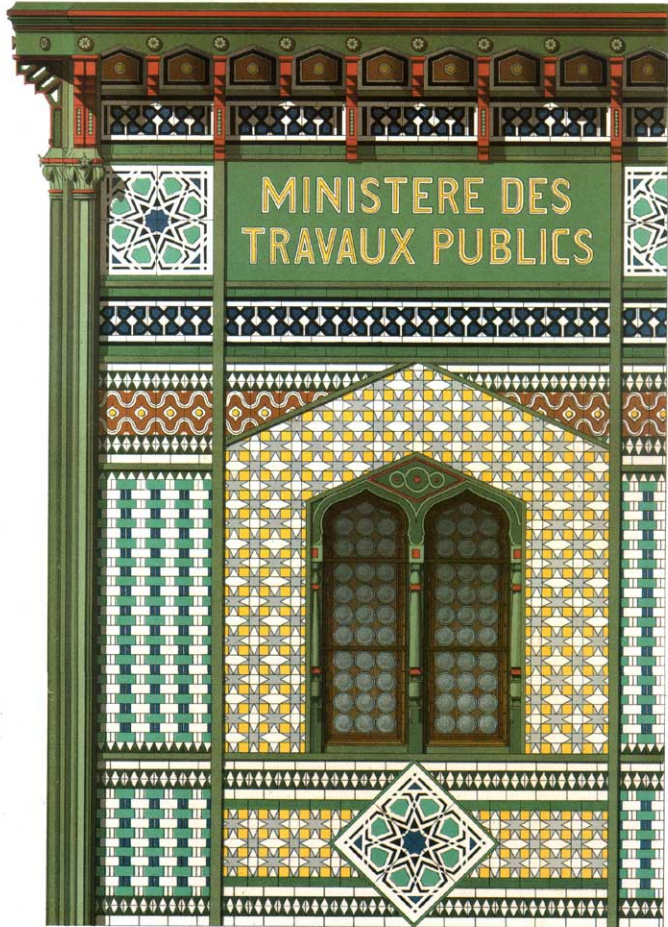


PLATE 56: Ministry of Works building, 1878 Paris fair (also Philadelphia, 1876); architect: de Dartein.

Elevation postérieure
Echelle de 0.02 p.m.

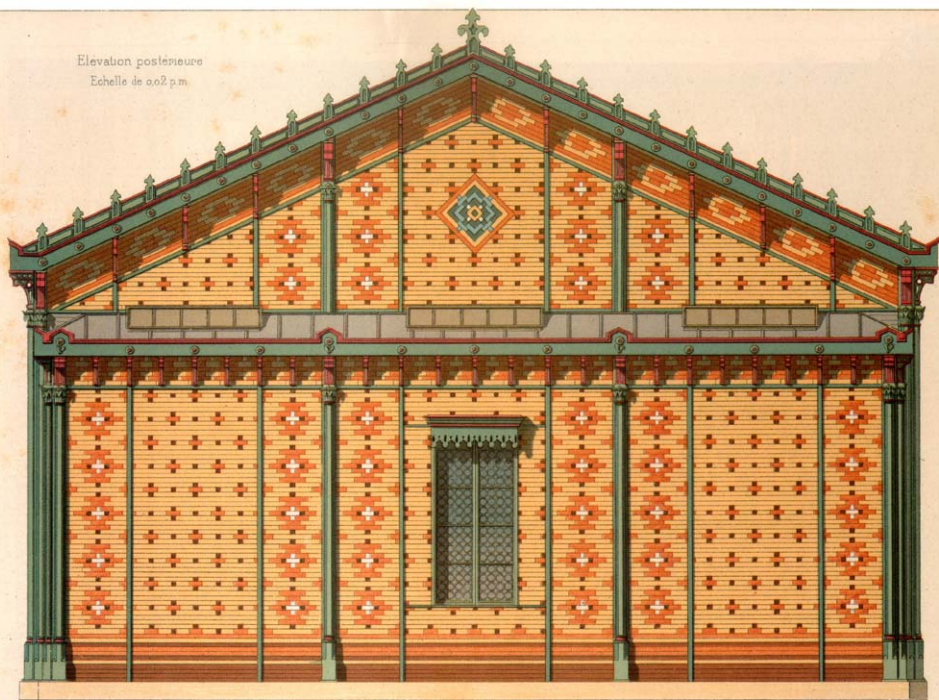
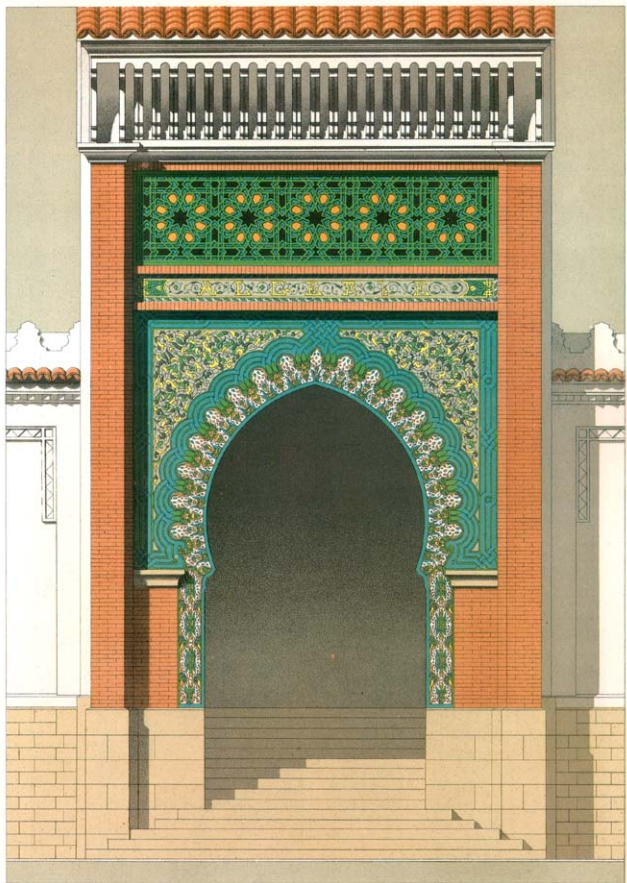


PLATE 58: Ministry of Works building, 1878 fair; architect: de Dartein.



Echelle de 0.025 pour mètre.

PLATE 59: Algerian palace, Exposition Universelle of 1878; architect: Wable.

Élévation
Ech. de 0,25 p. m.

Coupe

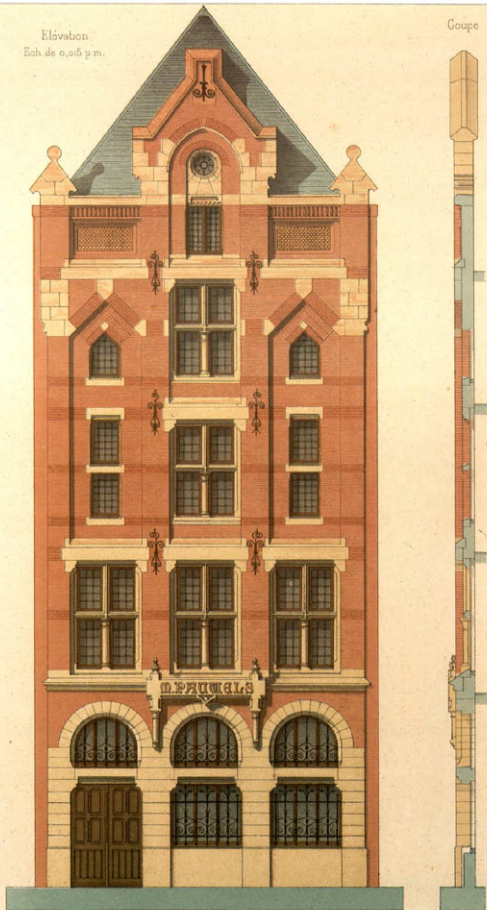
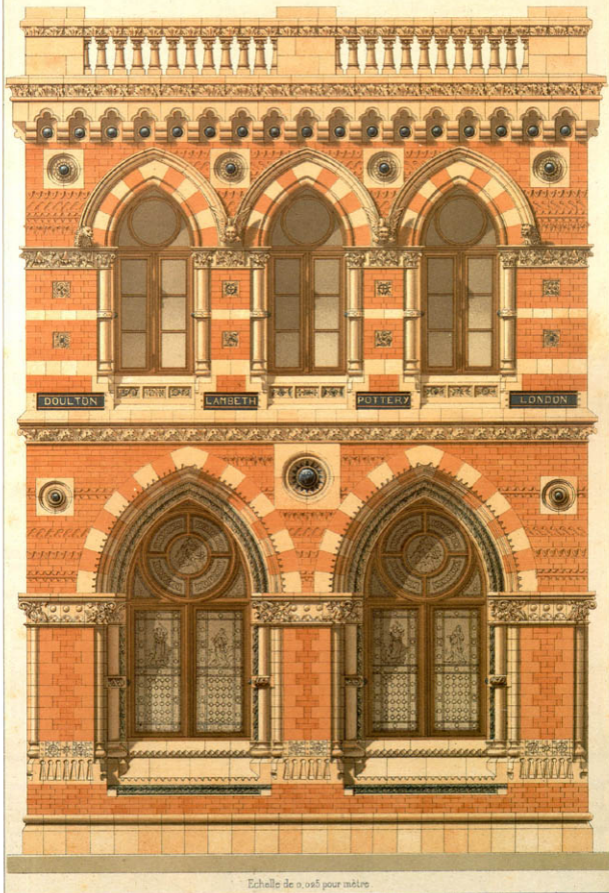


PLATE 60: Pauwels workshop, rue de la Vigne, Antwerp; architect: J. J. Winders.



Echelle de 0,025 pour mètre.

PLATE 61: Doulton building, Exposition Universelle, 1878 (based on original in Lambeth); architect: J. Starke Wilkinson.



PLATE 62: Two lower stories of a house in Brussels; architect: V. Jamaer.

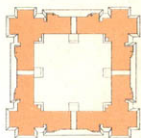


PLATE 63: Two upper stories of a house in Brussels; architect: V. Jamaer.



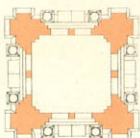
PLATE 64: Office and toilet of a horse market; architect: Auguste-Joseph Magne.

Plan A B



o.01 p m

Plan C D



o.01 p m



Echelle de 0^m 0^m 5^e pour mètres.

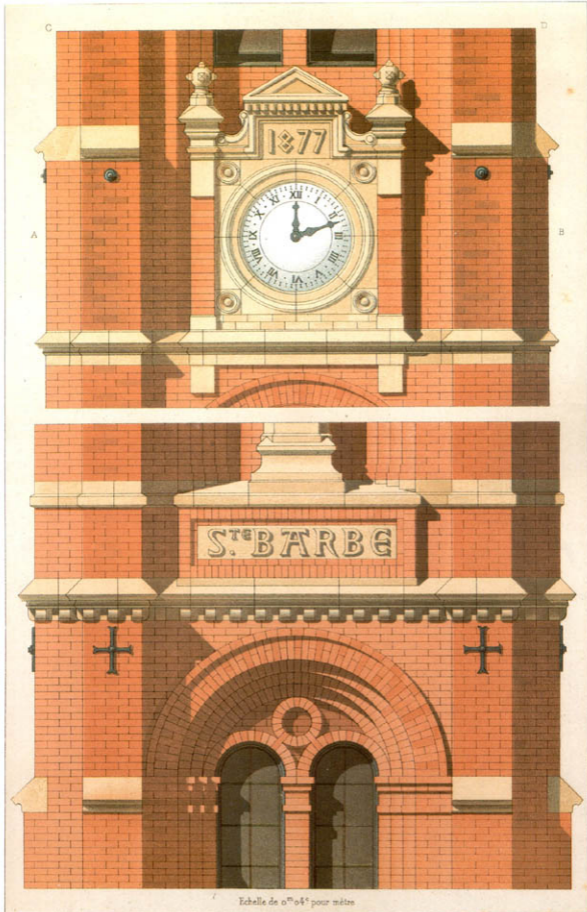


PLATE 66: Church in Noeux-les-Mines; architect: C. Moyaux.

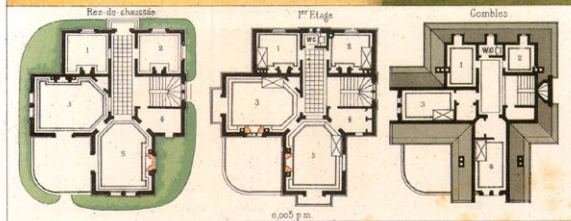
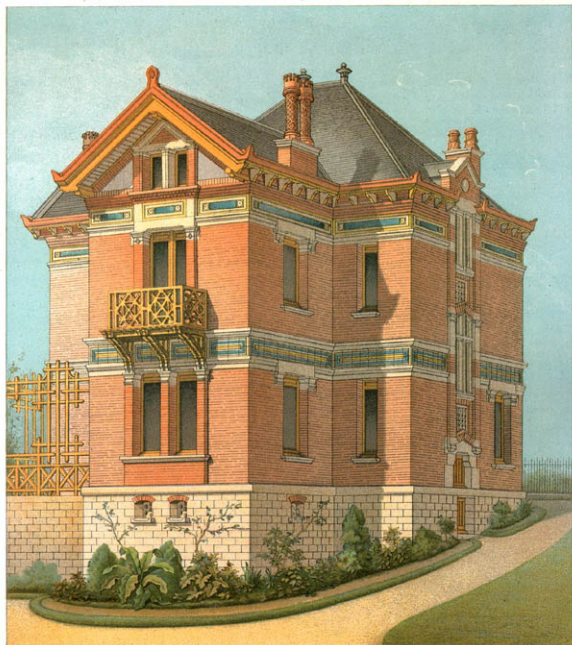
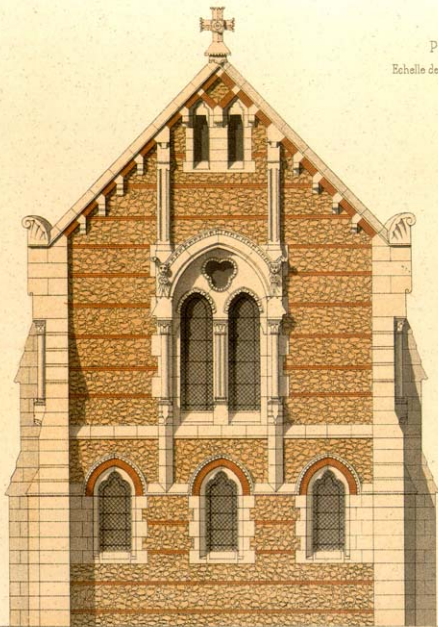
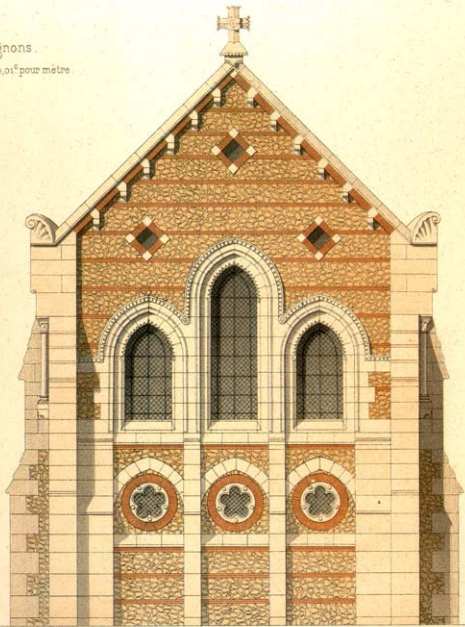


PLATE 67: Former park keepers' house, Buttes Chaumont (Paris); architect: Gabriel-Jean-Antoine Davioud.

Pignons.
Echelle de 0,01^e pour mètre



Transept



Abside

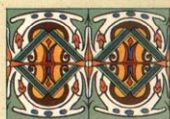
Elevation

Coupe



Echelle de 0,015 p.m.





Détail du Pavillon d'Angle

Echelle de 0,02 p.m.

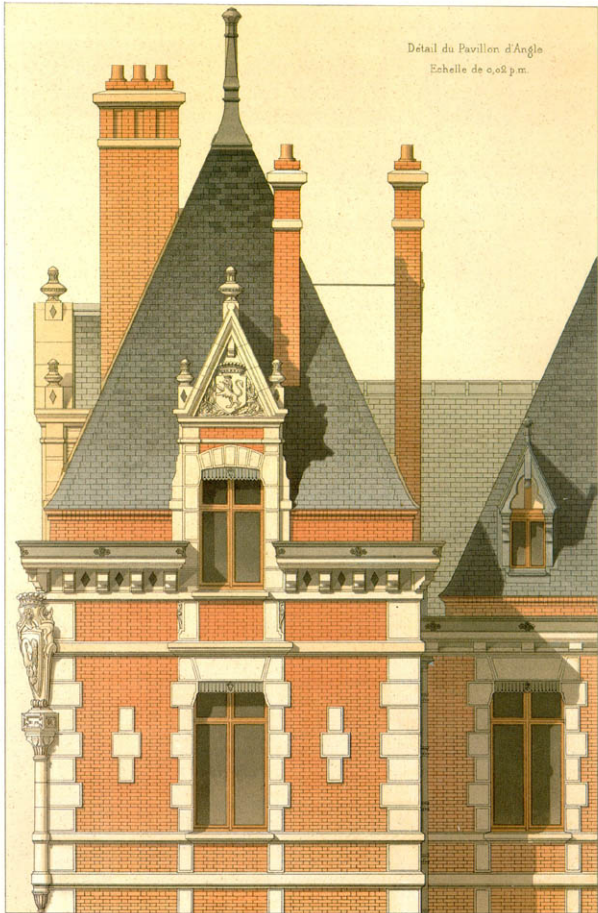
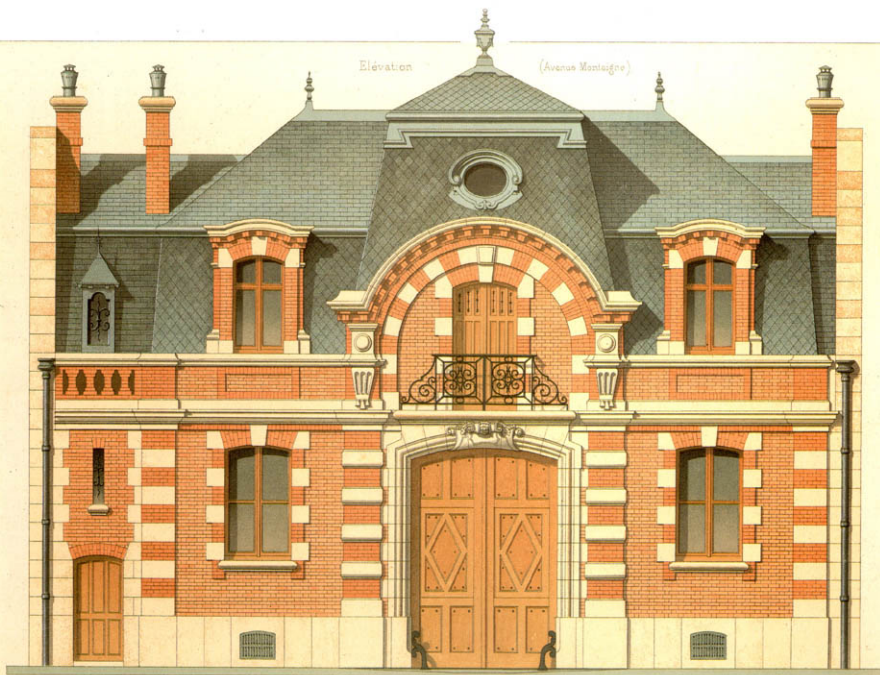


PLATE 74: Bishop's palace in Beauvais; architect: E. Vaudremer.



Élévation

(Avenue Montaigne)



Echelle de 0,02 p. m.

PLATE 76: Stable and storage shed of a Parisian town house; architect: Henri Parent.



IV



V



VI



VII



VIII



IX





Echelle de 0^m05 p. m.

ELEVATIONS

Face principale — Face latérale

Échelle de 1/200

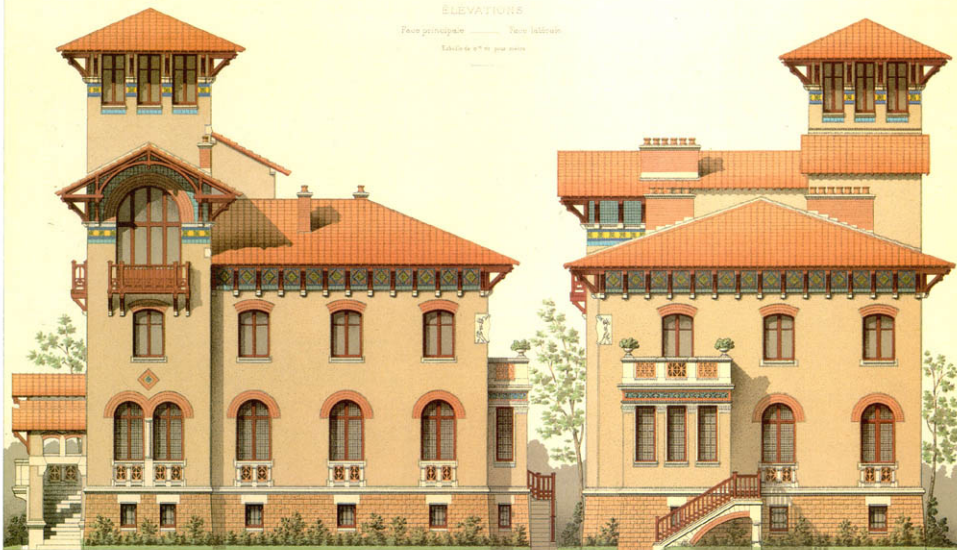


PLATE 81: Villa, boulevard de Boulogne, Boulogne-sur-Seine, 1882-84; architect: Lucien Magne.

Elevation

Echelle de 1/100 de son mètre

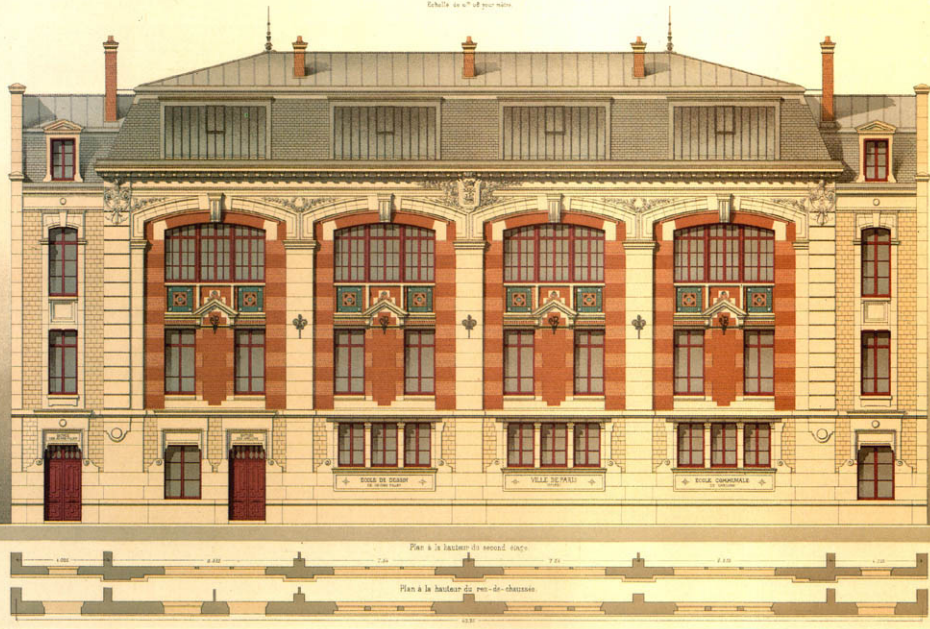
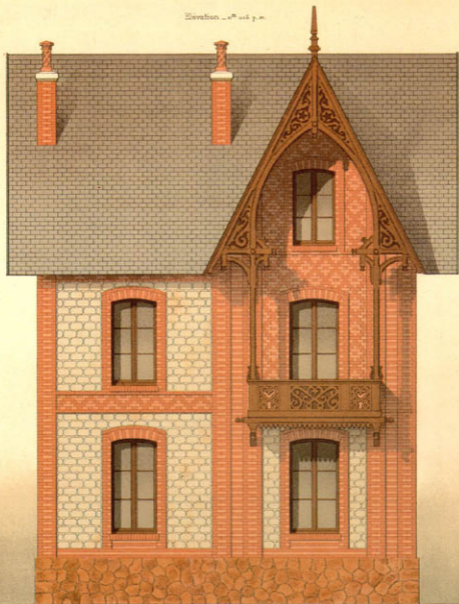


PLATE 89: School, rue Madame, Paris; architect: H. Erard.

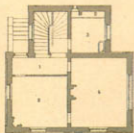
Elevation - n° 104 p. m.



Coupe

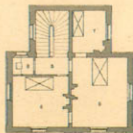
Plan du Rez-de-chaussée

1. Vestibule
2. Salle à manger
3. Cuisine
4. Salon



Plan du 1^{er} Etage

5. Dépense
6. Chambre
7. Ch. d'entrée
8. Cab. d'habitant



Plans et Coupe n° 104 p. m.



PLATE 91: Chalet d'Ambricourt at Villers-sur-Mer (Calvados *département*); architect: A. Feine.

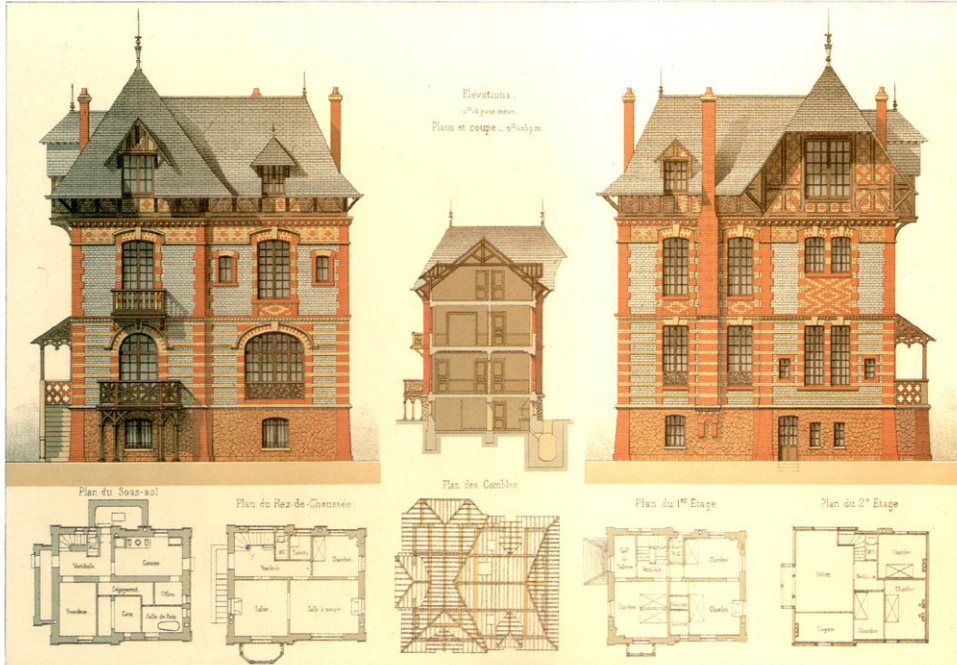


PLATE 92: Villa at Houlgate (near Deauville); architect: E. Papinot.

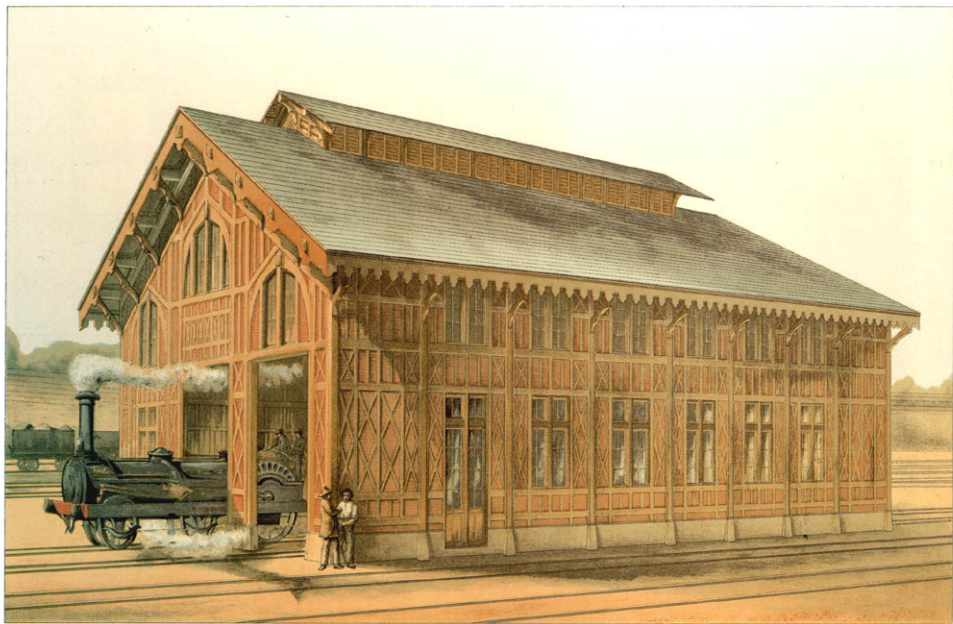
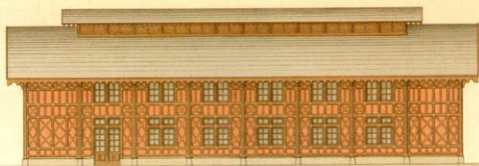
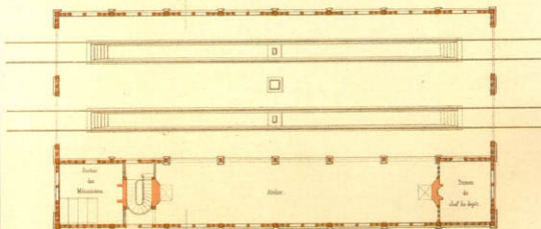


PLATE 93: Engine shed, Lamothe station (Southern line).

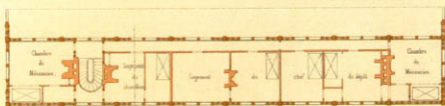
Façade principale.



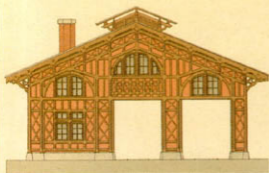
Plan du Rez-de-chaussée.



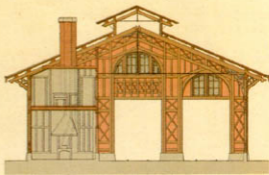
Plan du 1^{er} Etage.



Pignon.



Coupe.





Détail n°06 p. m.

Plan n°06 p. m.

Détail n°04 p. m.

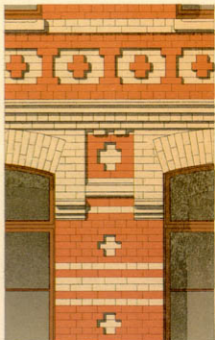
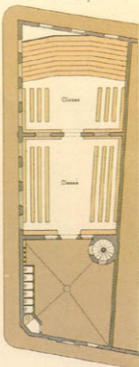
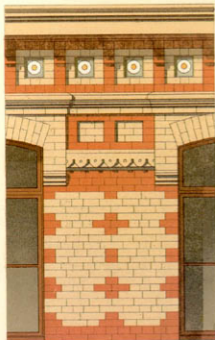
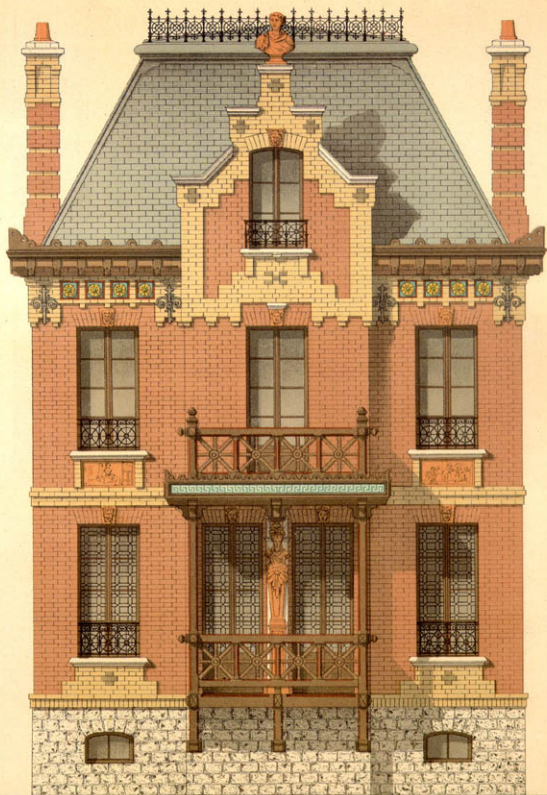


PLATE 96: Nursery school in Dunkerque (Dunkirk); architects: Lecoq and Delanoye.

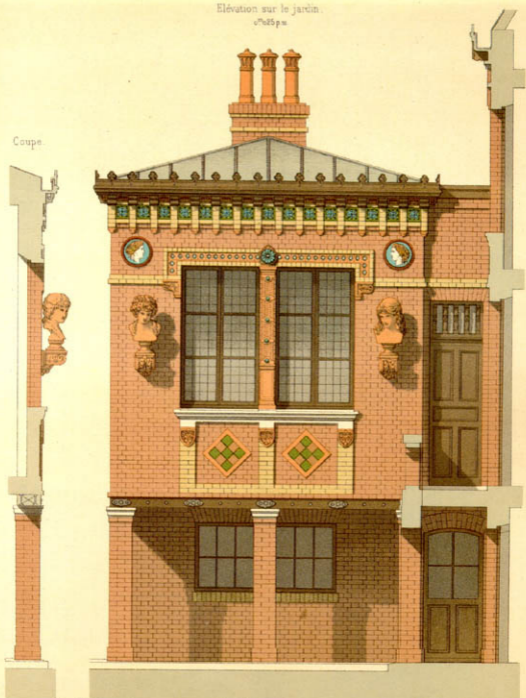
Élévation sur la rue



Echelle de 0^m05 pour mètres

Elevation sur le jardin.
0^m85 p.m.

Coupe.

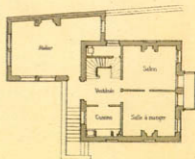
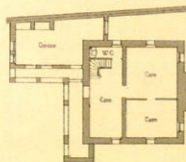


Plan du Sous-sol

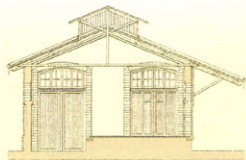
Plan du 1^{er} Etage.

Plan du Rez-de-chaussée

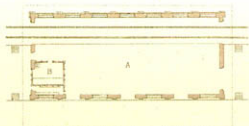
0^m005 p.m.



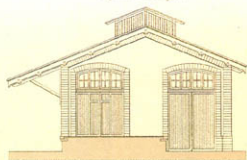
Coups (0.005 p.m.)



Plan (0.0025 p.m.)



Pignon (0.005 p.m.)



Élévation (0.01 p.m.)

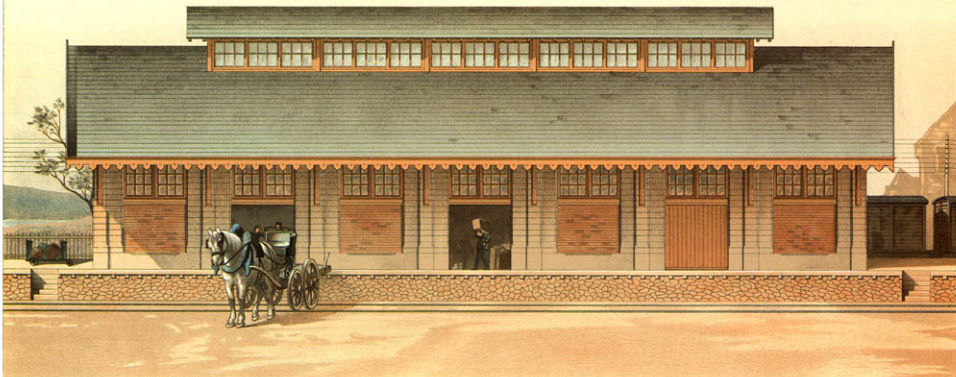
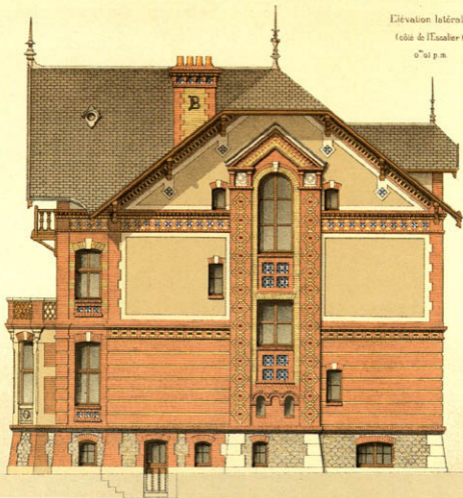
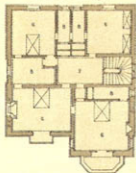
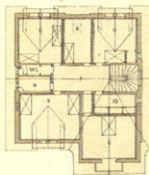
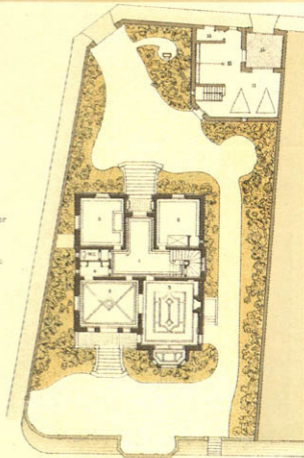


PLATE 103: Market.

Plan du 1^{er} Etage2^e Etage et Comble

Legende

- 1 Vestibule
- 2 Salle à manger
- 3 Salon
- 4 Office
- 5 Cabinet de travail
- 6 Chambre à coucher
- 7 Antichambre
- 8 Cabinet de Toilette
- 9 Linge sale
- 10 Lingerie
- 11 Ecurie
- 12 Ramasse
- 13 Trou à fumier
- 14 Cour de Service



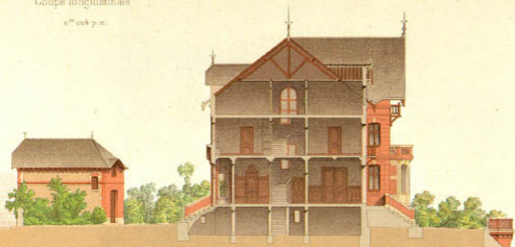
Élévation (côté de la mer)

07 et p.m.



Coupe longitudinale

0^m 000 p. m.

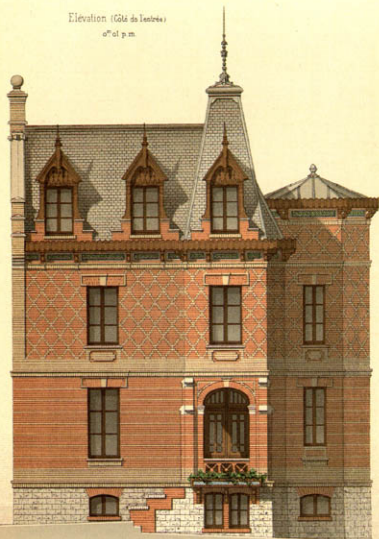


Elévation (côté de l'entrée)

0^m 001 p. m.



Elevation (Côté des fenêtres)
0^m 41 p. m.



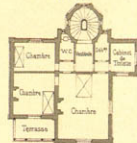
Coupe A B



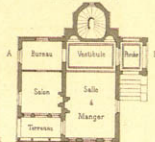
Elevation (Face latérale)
0^m 41 p. m.



1^{er} Etage



Roz-de-chaussée



Coupe et plans. 0^m 004 p. m.

Coupe perspective sur les terrasses.

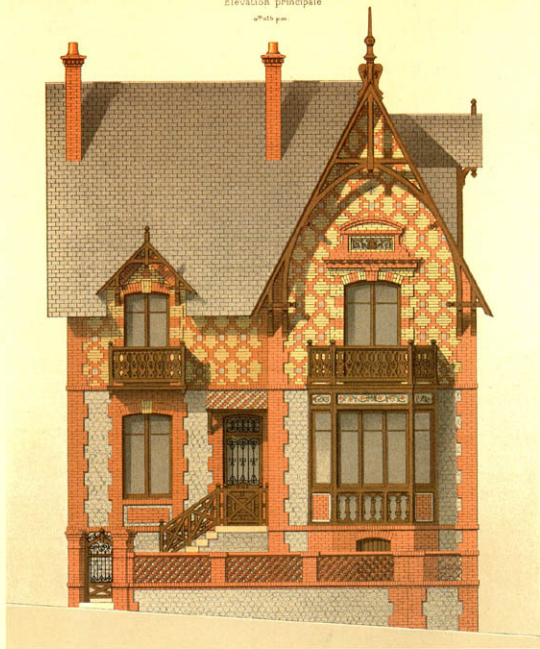
[Cité de la Seine]



PLATE 109: Restaurant de Bercy (Paris); architect: Lheureux.

Elevation principale

n° 265 p.m.

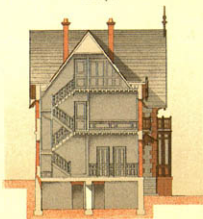
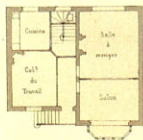


Coupe Longitudinale

n° 265 p.m.

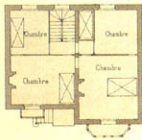
Rez-de-Chaussée

n° 265 p.m.

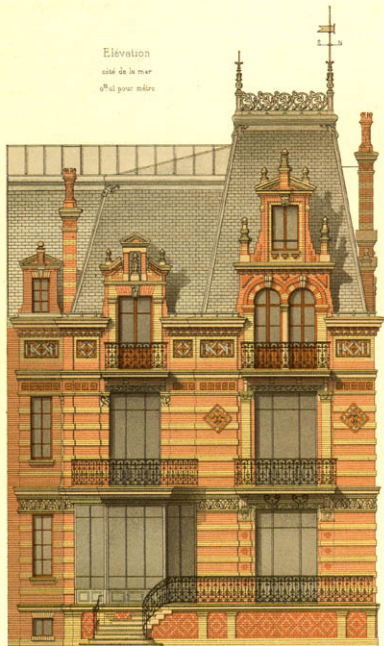


1^{er} Etage

n° 265 p.m.



Elevation
côté de la mer
1/100 pour mètres



Elevation
côté de l'intérieur
1/100 pour mètres



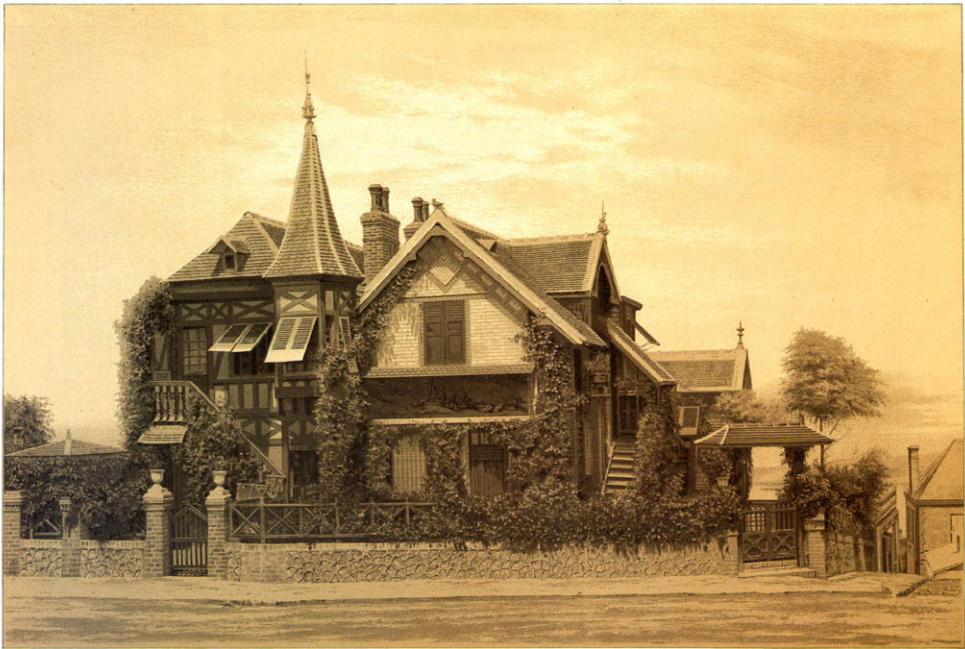
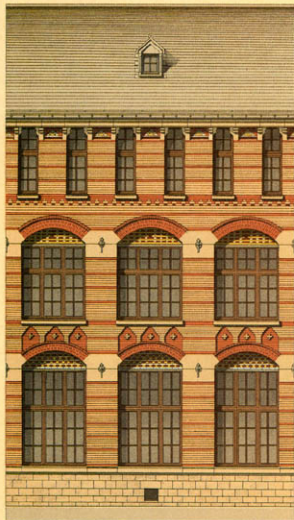


PLATE 113: The Eugène Decan villa at Villers-sur-Mer (Calvados *département*).

Élévation

Rez-de-chaussée et 1^{er} Etage: Classes et études
2^{es} Etage: Dortoirs.



Élévation

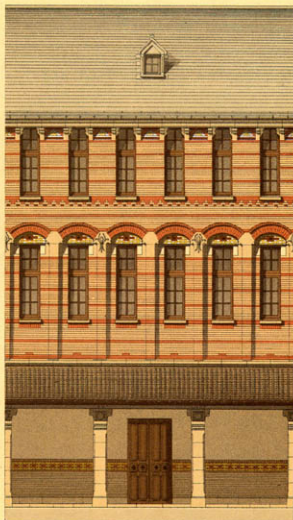
Rez-de-chaussée: Réfectoire. 1^{er} Etage: Classes et études
2^{es} Etage: Dortoirs.

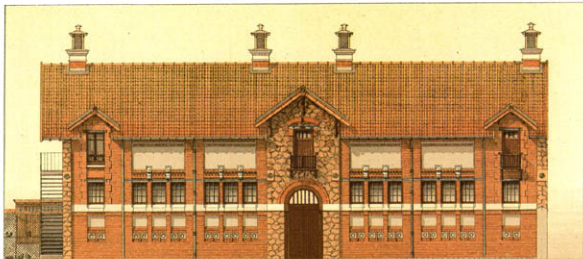


Échelle de 0^m01 pour mètre

Élévation

Rez-de-chaussée: Classes et études
1^{er} et 2^{es} Etage: Dortoirs.





Détail

Élévation ... Echelle de 1/1000 n. p.

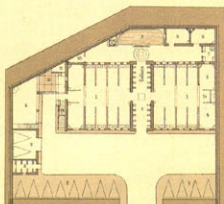
Détail



Légende

- | | |
|------------|--------------|
| 1 Sautis | 8 Alvéoles |
| 2 Poutres | 9 Réservoir |
| 3 Sallans | 10 Sapey |
| 4 Yrags | 11 Poutiller |
| 5 Doss | 12 Poutier |
| 6 Sallans | 13 W.C. |
| 7 Flammeux | 14 Portance |

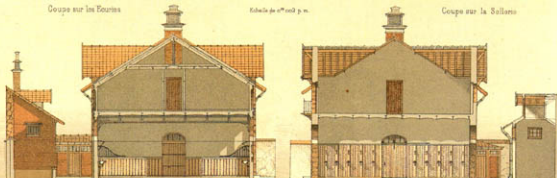
Plan général



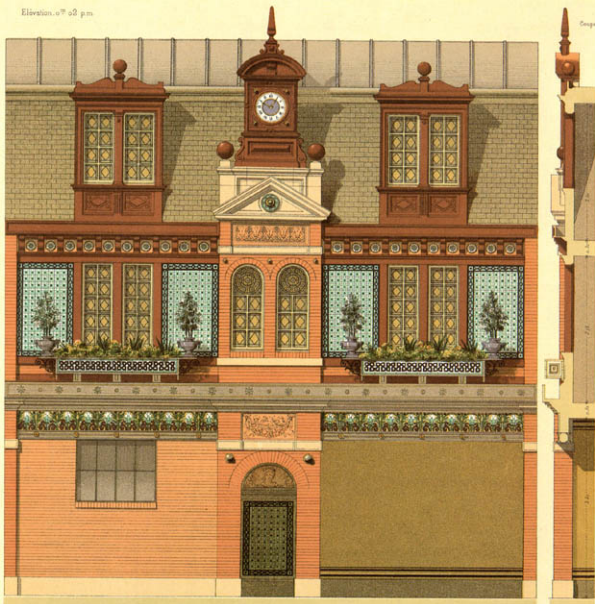
Coupe sur les Bourtes

Echelle de 1/1000 p. m.

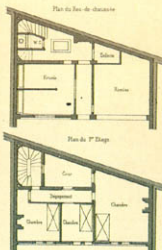
Coupe sur la Sallans



Echelle de 1/1000 p. m.



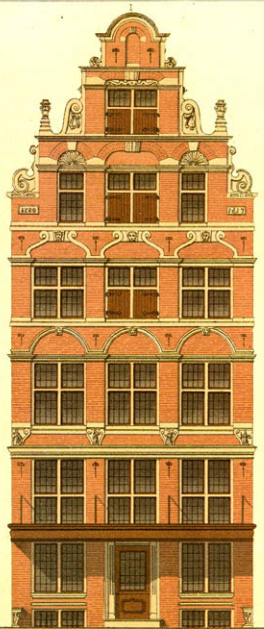
n° 02 p.m.



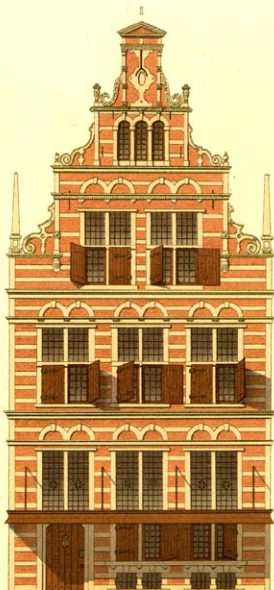
Echelle de n° 02 p.m.



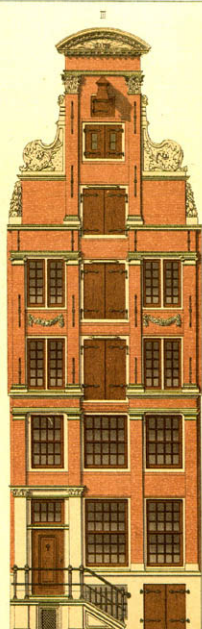
n° 02 p.m.



Amsterdam



Haarlem



Amsterdam

Élévation principale
1^m 0,5 pour mètre

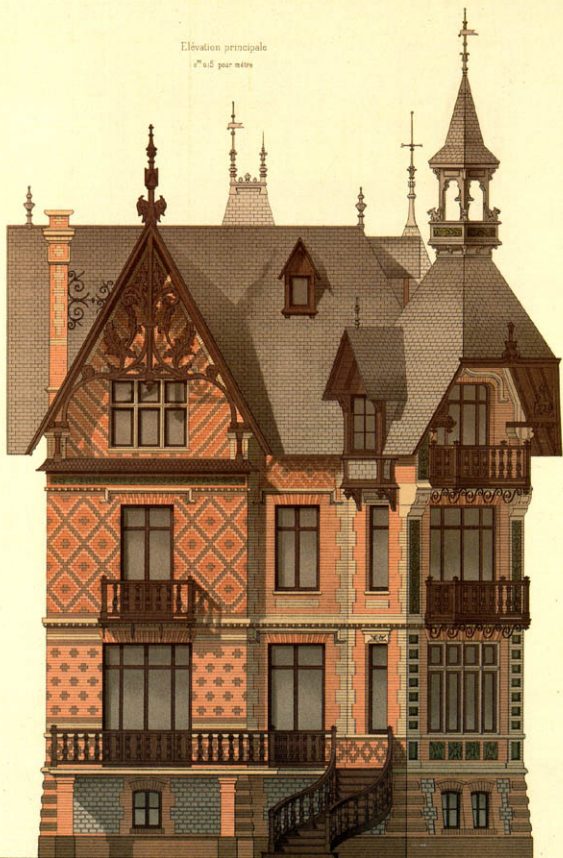
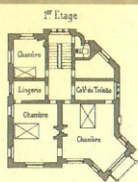
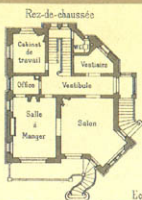
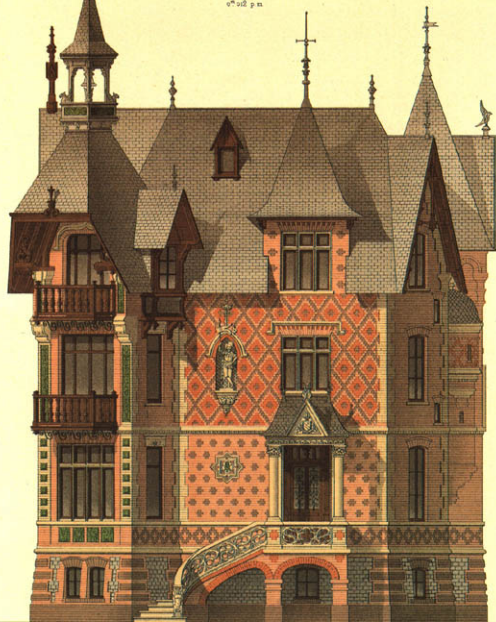


PLATE 119: Villa Brodu at Beuzeval (Calvados département); architect: Baumier.

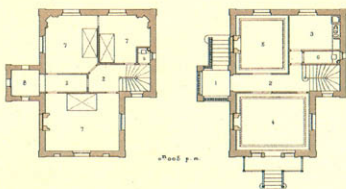
Elevation
 (Côté de l'entrée principale)
 0^m 012 p. n.



Echelle des plans 0^m 004 p. n.

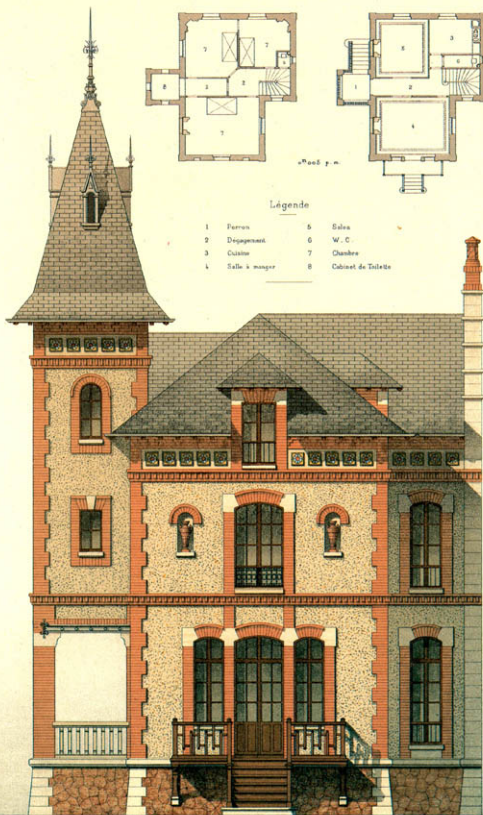
Premier étage

Rez-de-chaussée



Légende

- | | | | |
|---|----------------|---|---------------------|
| 1 | Perron | 5 | Salon |
| 2 | Déjeuner | 6 | W. C. |
| 3 | Cuisine | 7 | Chambre |
| 4 | Salle à manger | 8 | Cabinet de Toilette |



Echelle de 1/1000 p.m.

Elévation Principale



Elévation Postérieure



— Table de 0,010 p. m.

Elevation (Côté du Jardin)

17^m 000 p. m.

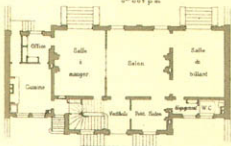


Coupe



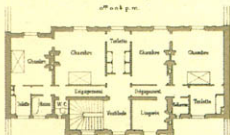
Plan du Rez-de-chaussée

17^m 000 p. m.



Plan du 1^{er} Etage

17^m 000 p. m.

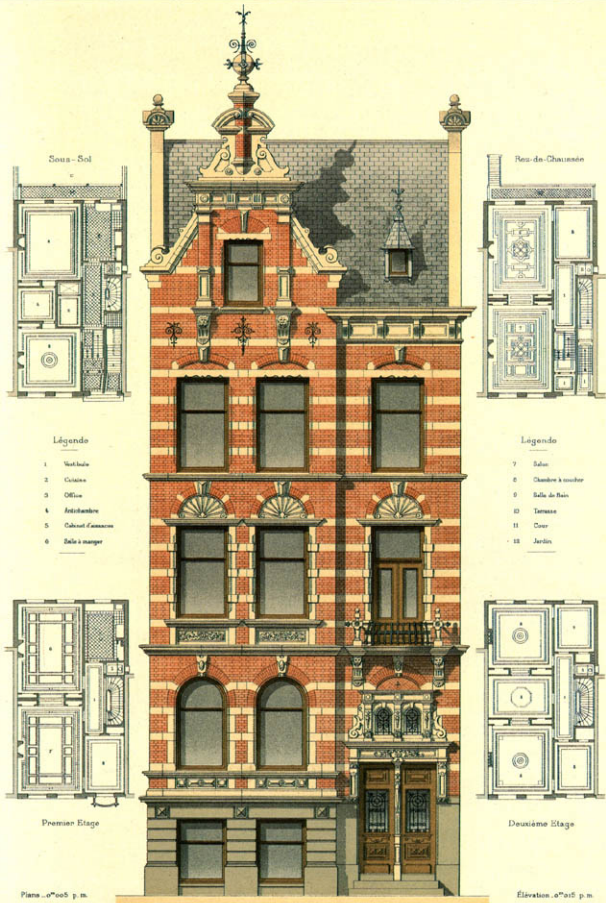


Elevation (Côté de la cour)

17^m 000 p. m.

Coupe





Sous-Sol

Rez-de-Chaussée

Légende

1. Wc-huiskamer
2. Cuisines
3. Office
4. Antichambre
5. Cabinet d'attente
6. Salle à manger

Légende

7. Salon
8. Chambre à coucher
9. Salle de bain
10. Terrasse
11. Cour
12. Jardin

Premier Étage

Deuxième Étage

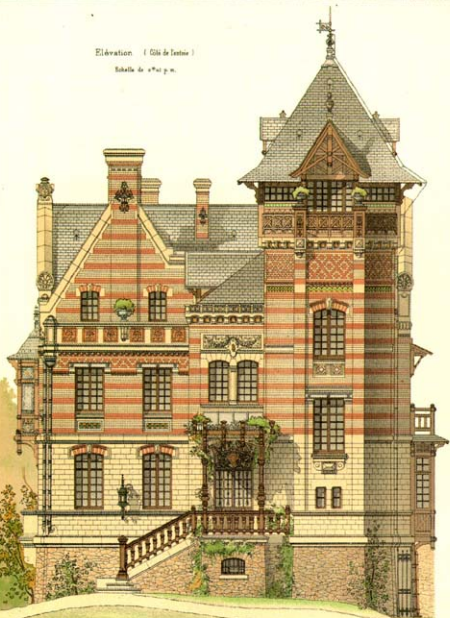
Plans ..0"005 p. m.

Élévation ..0"015 p. m.

PLATE 125: Two-family house in Rotterdam, 1887; architect: J. Verheul.

Élévation (Côté de l'estrie)

Échelle de 1/100 p.m.



Élévation (Côté de l'estrie)

Échelle de 1/100 p.m.

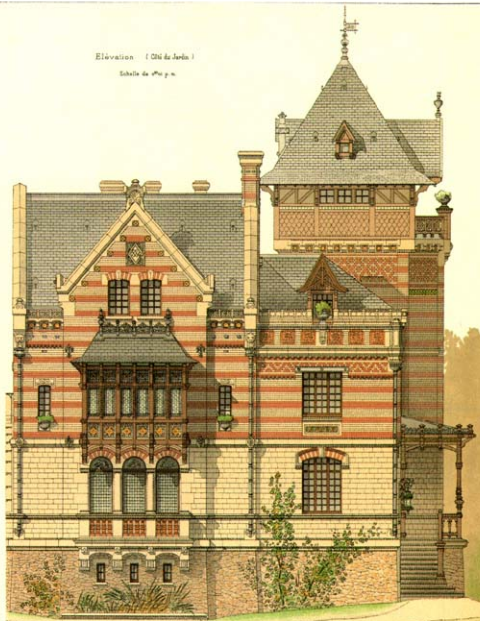
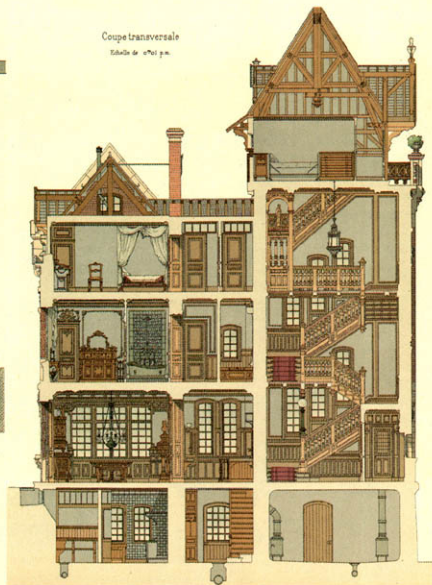


PLATE 126: Competition design for a rural home; architect: Bonnier.

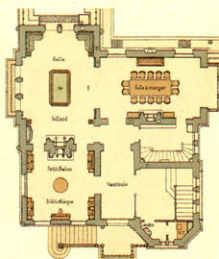
Plan du Sous-sol



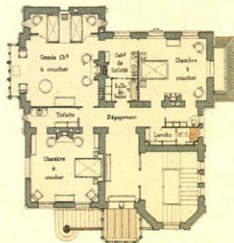
Coupe transversale
Echelle de 1/200 p.m.



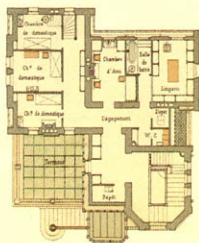
Plan du Rez-de-chaussée



Plan du 1^{er} Etage



Plan du 2^e Etage



Echelle des Plans 1/200 p.m.

Elevation principale

27m08 pour mètres.

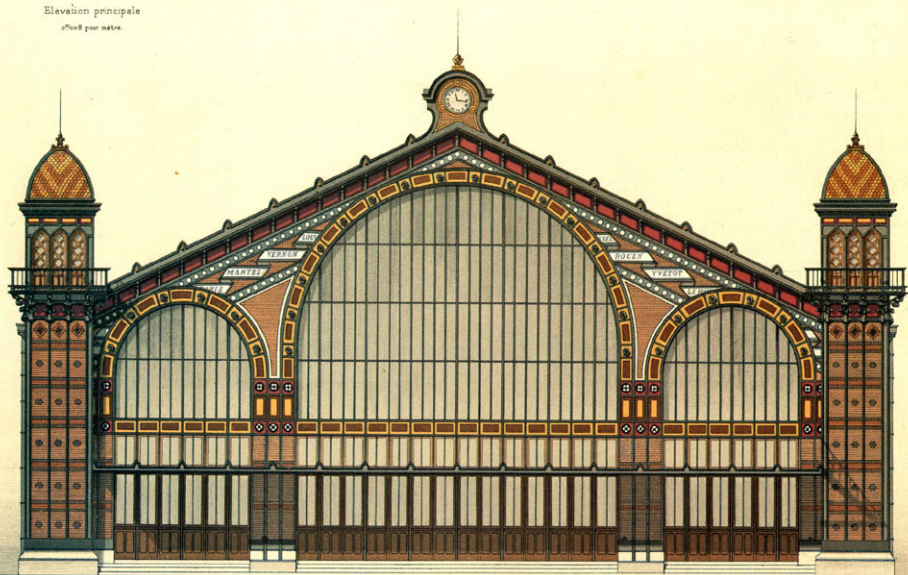


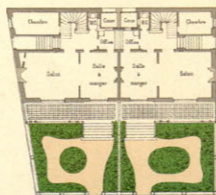
PLATE 128: Railroad station, Le Havre; architect: J. Lisch.

Elevation... 0^m et p. m.

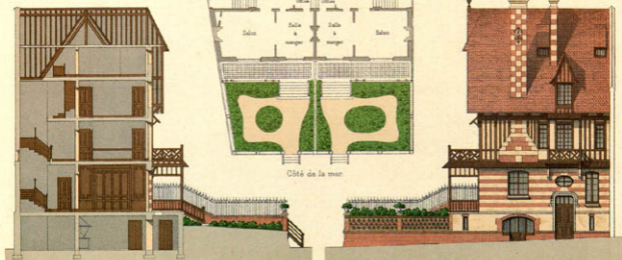


Plan... 0^m et p. m.

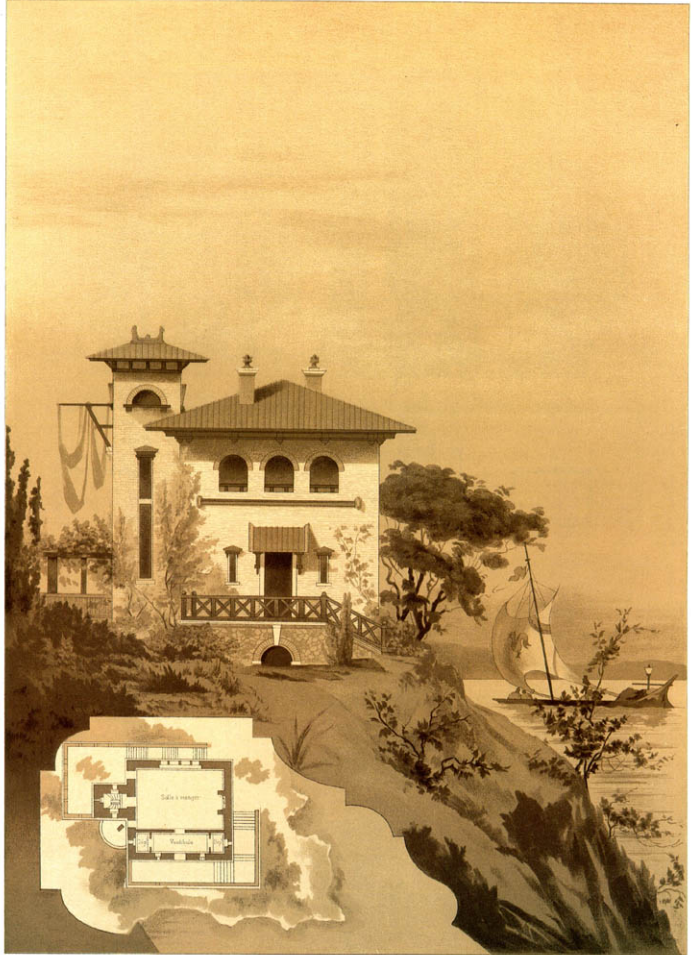
Coupe



Face latérale

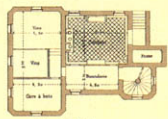


Echelle de 0^m et p. m.

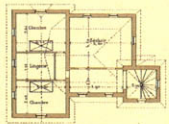




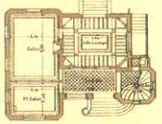
Plan des Caves



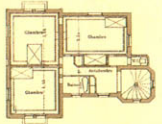
Plan des Combles



Plan du Rez-de-chaussée



Plan du 1^r Étage



Coupe n°1027 p. m.

Echelle des Plans n°1027 p. m.

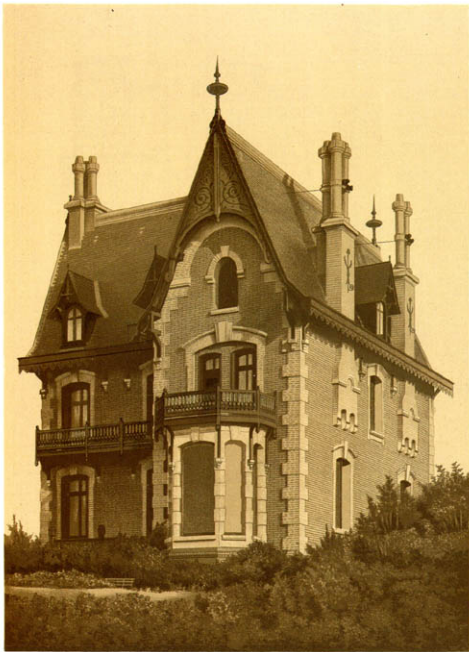


PLATE 138: Villas at Deauville; architects: H. Blondel (left) and Breney.

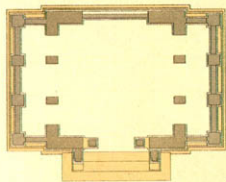


Echelle de 0^m10 p. m.

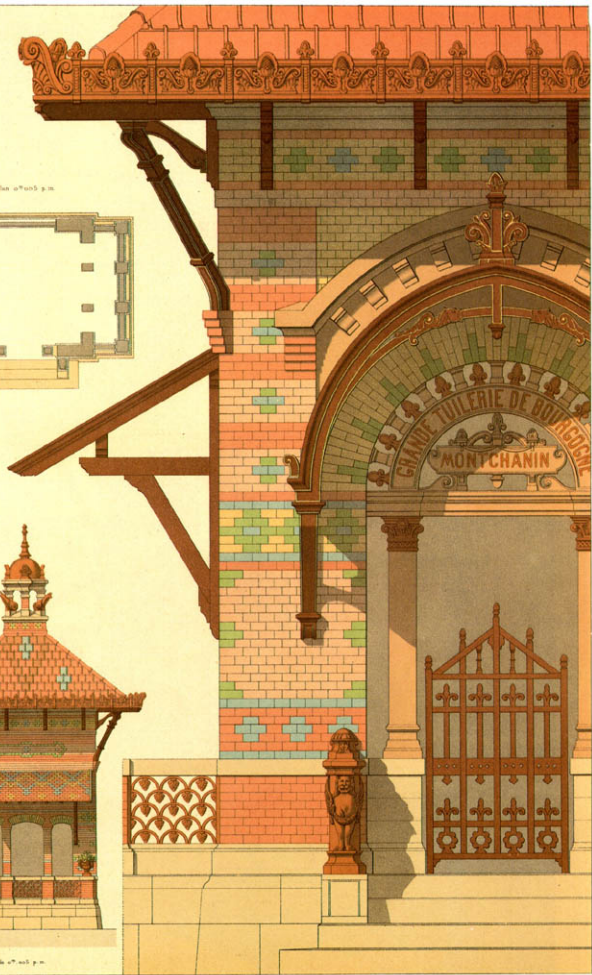
Détail

n° 14 p. m.

Plan n° 14 p. m.

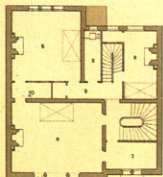


Elev. de n° 14 p. m.

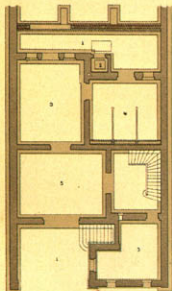


Légende

- 1 Cour
- 2 Cabinet d'écritures
- 3 Cave
- 4 Escue
- 5 Penne
- 6 Chambre
- 7 Chambre d'enfant
- 8 Salle de bain
- 9 Dépagement

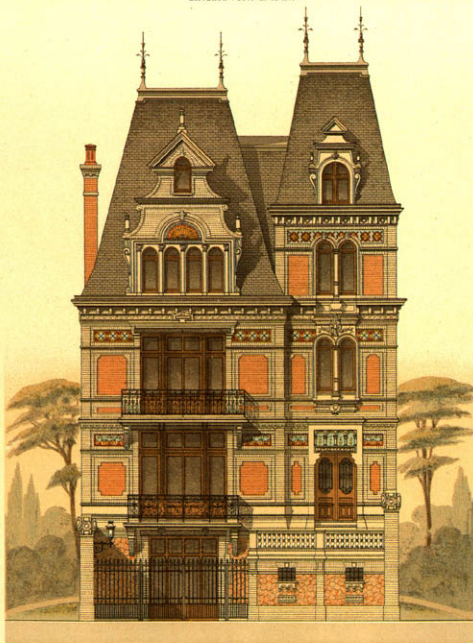


1^{er} Etage



Sous-Sol

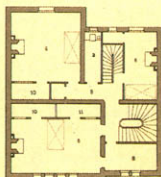
Élévation (Côte de la mer)



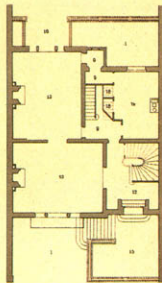
Élévation 0^m01 p.m. Plans 0^m005 p.m.

Légende

- 10 Cabinet de toilette
- 11 Armoire
- 12 Salle à manger
- 13 Salon
- 14 Cuisine
- 15 Terrasse
- 16 Passerelle
- 17 Vestibule
- 18 Laveuse et office.



2^e Etage



Rez-de-chaussée

Élévation
d'édifice.

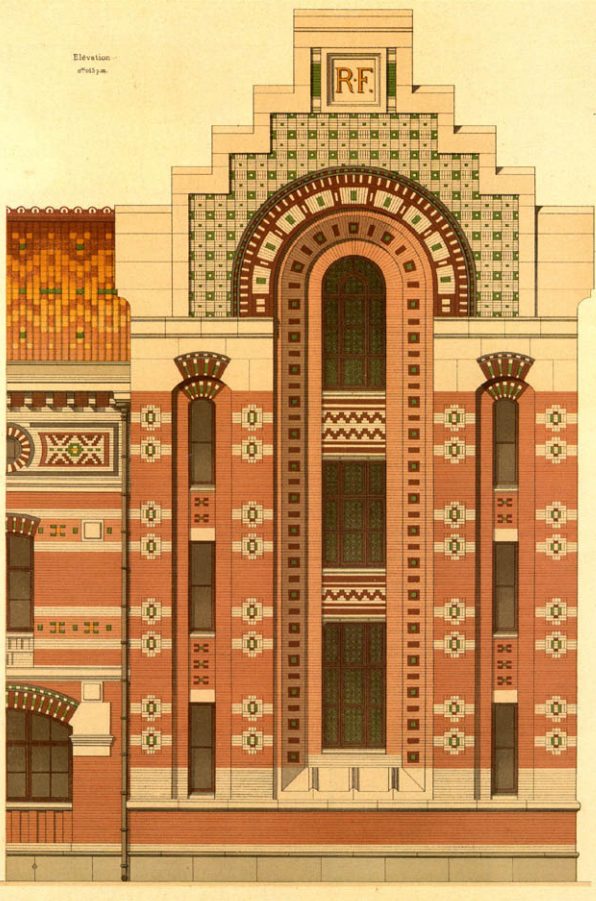
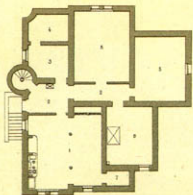


PLATE 142: Staircase pavilion, National Technical School, Armentières (Nord département); architect: Charles Chipiez.

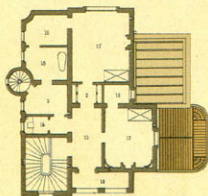
Coupe Transversal — n°104 p. m.

Sous-sol

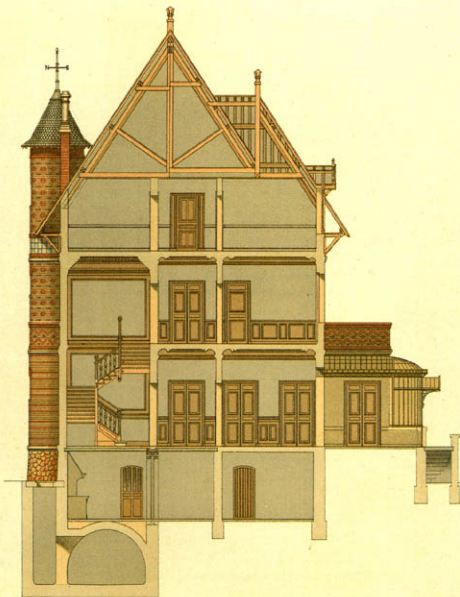


Légende

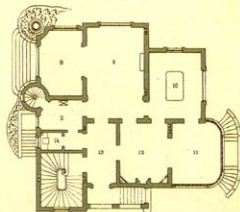
- 1 Cuisine
- 2 Dépoussier
- 3 Office
- 4 Comtois
- 5 Cave
- 6 Cellier
- 7 Dépôt
- 8 Salle à manger d'hiver
- 9 Salle à manger
- 10 Salle de lecture



Premier Étage

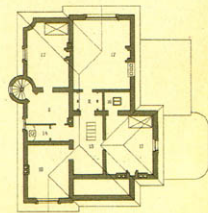


Rez-de-chaussée



Légende

- 11 Salle
- 12 Salon
- 13 Vestibule
- 14 Cab. d'attente
- 15 Salle de bain
- 16 Cab. de toilette
- 17 Chambre
- 18 Loge
- 19 Logerie



Comblés

Échelle de plan n°104 p. m.

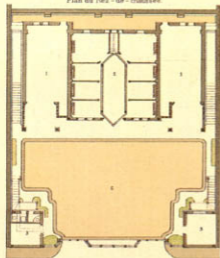
PLATE 143: Villa at Pont-à-Mousson (near Nancy); architect: Pierre Chabat.

Elevation principale

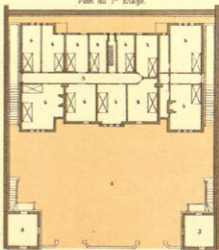
1/2 et p. m.



Plan du Rez-de-chaussée



Plan du 1^{er} Etage



Plans ... 1/2 et p. m.

Elevation latérale

1/2 et p. m.

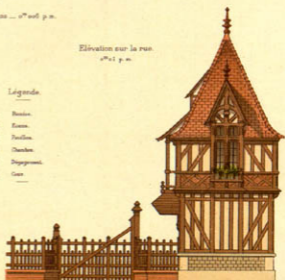


Elevation sur la rue

1/2 et p. m.

Légende

1. Hall
2. Esc.
3. Poêle
4. Chambre
5. Dépense
6. Cuisine

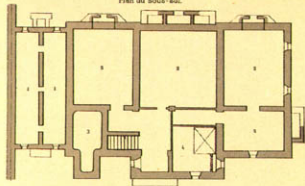


Elevation sur le Jardin
n° 1039.

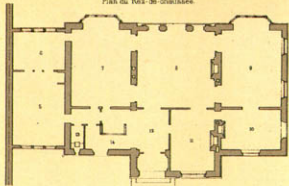


PLATE 147: Villa Weber, rue Erlanger, Paris; architect: Paul Sédille.

Plan du sous-sol.

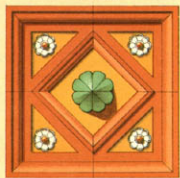
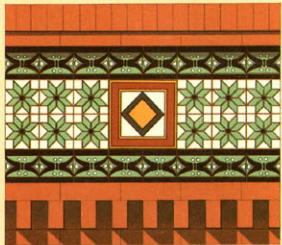
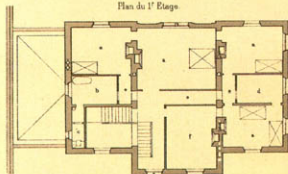
(0^m10 p.m.)

Plan du Rez-de-chaussée.

(0^m10 p.m.)

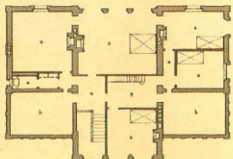
Légende

- | | |
|------------------|-----------------------|
| 1 Terrain | 8 Salon |
| 2 Cave | 9 Salle de Billard |
| 3 Foyer | 10 Petit salon |
| 4 Cuisine | 11 Bibliothèque |
| 5 Courant | 12 Vestibule |
| 6 Office | 13 Cab' d'aisances |
| 7 Salle à manger | 14 Escalier des caves |

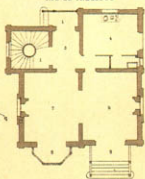
Couronnement de fenêtre ... 0^m60 p.m.(0^m70 p.m.)Détail de la frise ... 0^m60 p.m.Plan du 1^{er} EtagePlan du 2^e Etage

Légende

- | |
|--------------------|
| a Chambre |
| b Salle de bains |
| c Cab' d'aisances |
| d Cab' de toilette |
| e Dépoussié |
| f Salon |
| g Lingerie |
| h Terrasse |

Echelle des plans 0^m005 p.m.

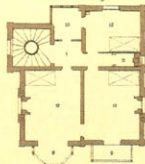
Rez-de-Chaussée



Légende.

- | | |
|-------------------|-------------------------|
| 1. Pailier | 7. Salon |
| 2. Dépeçement | 8. Veranda |
| 3. Cave | 9. Marquis |
| 4. Cuisine | 10. Cabinet de toilette |
| 5. Vestibule | 11. Cabinet d'attente |
| 6. Salle à manger | 12. Chambre |

Premier Etage

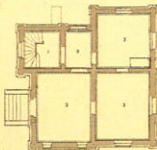


Elevation (côté de la mer)

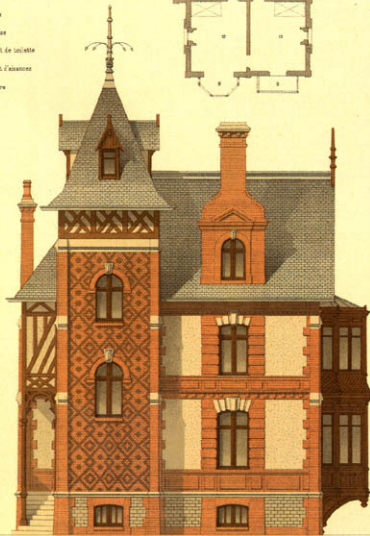
Echelle des Elevations

1/100 m.

Sous-Sol



Echelle des plans 1/200 m.



Elevation (côté de Trouville)

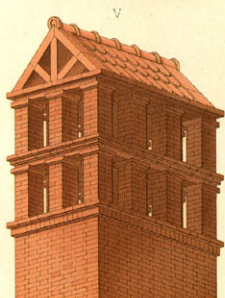
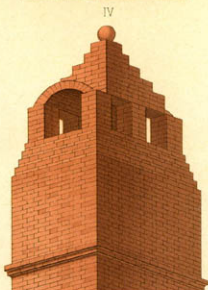
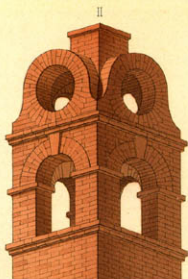


PLATE 151: Chimney shafts, from cities in France and Switzerland.

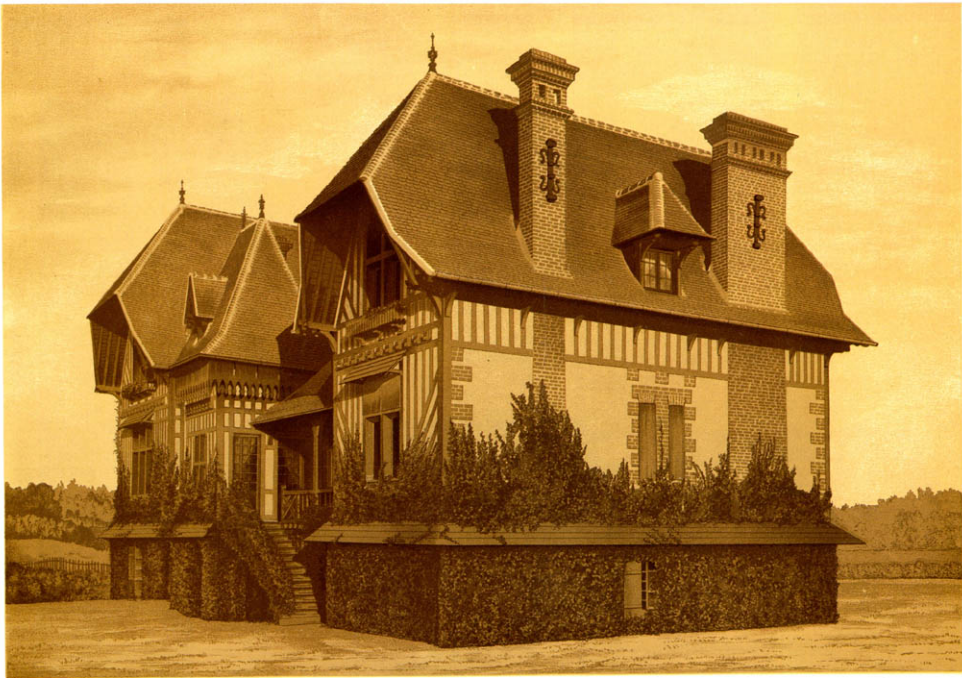


PLATE 152: Villa "La Hutte" at Deauville; architect: E. Saintin.

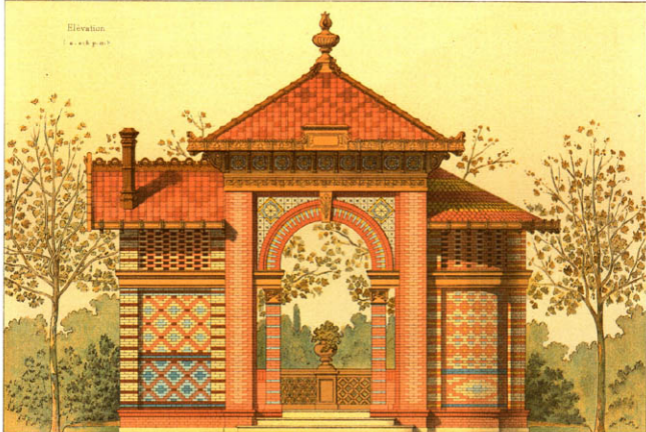
Elevation

Salon de l'Art pour nous.

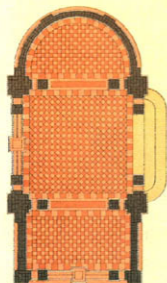


PLATE 155: Painter's studio, Neuilly (Paris); architect: Simonet.

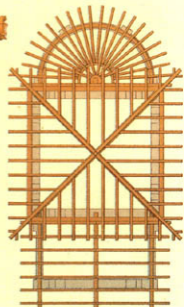
Elevation
1 a. 203 p. 01



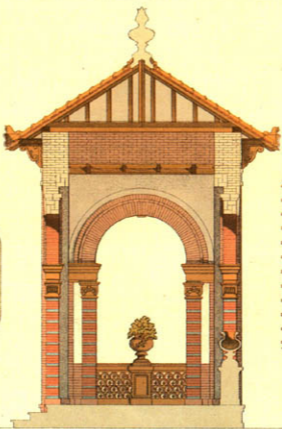
Plan
0. 213 p. 01



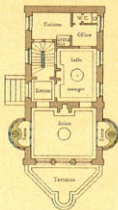
Plan du comble
0. 213 p. 01



Coupe 0. 213 p. 01



Rez-de-Chaussée (1:0.1 p.m.)



Elevation
n. 02 p.m.

Premier Etage (1:0.1 p.m.)

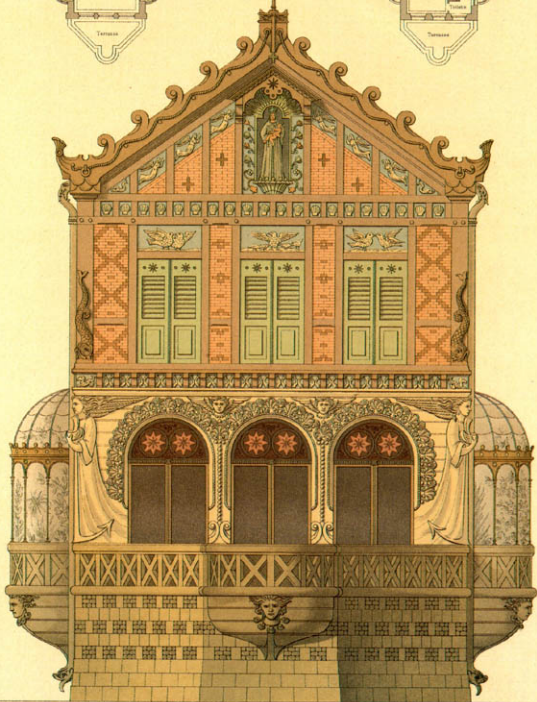
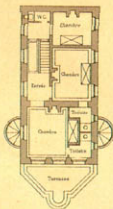


PLATE 157: Design for a seaside house; architect: Hügelin.



Echelle de 1/2 et p. m.

PLATE 158: Palace of Fine and Liberal Arts, 1889 world's fair; architect: Formigé.

Partie supérieure d'une travée.

Echelle de 1/200 et 1/100.

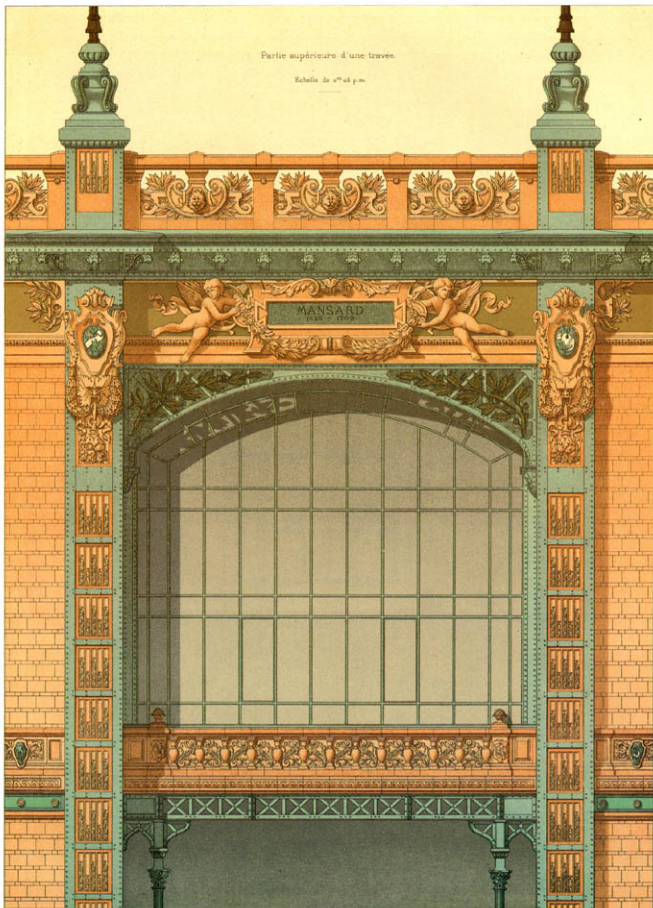


PLATE 159: Palace of Fine and Liberal Arts, 1889 world's fair; architect: Formigé.

Côté du Jardin

Elevations

Echelle de 0/112 pour mètres

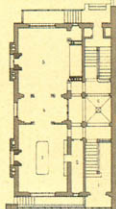
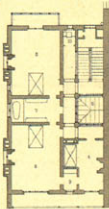
Côté de la Rue

Légende

- | | |
|-------------------|---------------------|
| 1. Vestibule | 6. Courvra |
| 2. Office | 7. Salle de bain |
| 3. Salle à manger | 8. Chénieres |
| 4. Petit Salon | 9. Cal' de toilette |
| 5. Salon | 10. Cal' d'alcôve |

1^{er} Etage

Rou-de-Chaussée



0/112 p.m.